



STRATENOTES

A National Newsletter for SIM Trainers

Volume 5, Issue 5 February 1997

SCORE again! Manual's format, content, appearance revised

Over the past couple of years, we have received lots of feedback about the *SCORE Skills Instructor's Manual*. We have heard great success stories about the results that have been produced in classrooms across the country with regard to students learning how to work with each other. We also heard that the format of the book was difficult to use, that the style was "too elementary," that the skill steps needed modification, and that the lessons were too long. In an effort to respond to teachers' feedback, we have overhauled the whole book. The content changes that have been made are as follows:

1. The lessons have been shortened. Only the most critical content has been kept.
2. The second model of each skill has been omitted. Teachers indicated that they felt that the second model was redundant and not needed, and they were dropping it from their instruction. Our data indicate that we can get great results with just one teacher model.
3. The SEE Steps have been simplified. Both voice tone and facial expression now have only two options: pleasant or neutral.
4. The Skill Steps for the Compliment Others Skill, the Offer Help or Encouragement Skill, and the Recommend Changes Nicely Skill have been modified. "Say the person's name" has been deleted as a separate skill step from the cue cards on all three skills. The step seemed unnecessary for students who are working in a small group over a long period of time; however, the text recommends that the step can be used whenever appropriate. The skill steps for the Offer Help or Encouragement Skill are "Ask if the person wants help," "Give help," and "Offer encouragement." For the Recommend Changes Nicely Skill, the skill step "Explain what was incorrect" was changed to "Explain what could be changed."
5. The Activity Sheets, Skill Watch Sheets, and the SCOREboard Activity have been omitted. Teachers indicated that the amount of copying and paperwork was unwieldy.

Some of the activities still are described in the text, however.

6. An application activity has been added to each skill lesson.
7. A role-play activity has been added to each role-play sheet so that there are four role-play activities for each pair (two for each person).
8. More information has been included in the At-a-Glance pages. Prompts for teacher questions have been added.

In addition, the following changes have been made to improve the appearance, durability, and usefulness of the manual:

1. The cover is coated with a special finish to improve its life.
2. The manual is three-hole punched.
3. The layout of the pages has been changed to make them easy to read and to provide more white space for notes. The two-column format has been converted to a one-column format.
4. Mini-pictures of the cue cards and student materials appear in the margin to cue the teacher as to which visual device is most appropriate at a particular time.
5. The art work has been changed to make the materials appear more appropriate for older students.
6. The size of the headings has been increased to improve readability.
7. Possible student responses have been bulleted and put into list form instead of being buried in the text.

We're hoping that these changes will be helpful for future users of the instructional procedures. We knew that making substantial changes in the skill steps would mean that you would have to change the overheads you use when you train teachers to teach the SCORE Skills, but we didn't see any way to avoid this reality, given the amount of feedback we had received. As always, all trainers will receive a 40 percent discount on personal copies of the manual. Please be sure to review the new manual and make new overheads before you train teachers to teach the SCORE Skills, because every page of the new manual is different from the old manual.

SIM Training Network



Upgraded software for StrateNET offers new directory options

Note: The January issue of Stratenotes described how to download the latest version of the FirstClass software used to communicate through StrateNET. In this issue, we begin the first in a series of articles describing the benefits of using the new software. You also may download the Using FirstClass Release 3.5 Supplement manual, which describes all of the changes in detail, from the StrateNET Info folder under the News conference on your desktop.

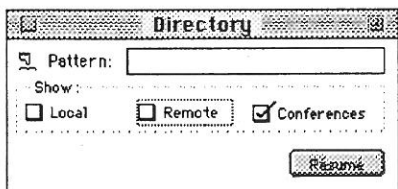
The new Directory features of the upgraded FirstClass software provide enhanced methods of searching for names in the StrateNET system and addressing messages.

Searching the FirstClass Directory

To search the FirstClass Directory for the name of a user, conference, or gateway, follow these steps:

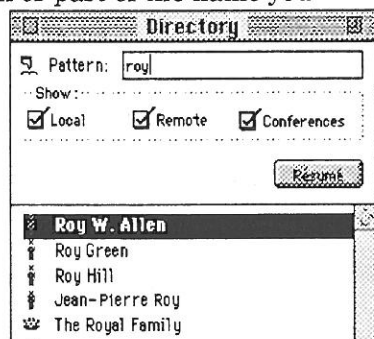
1. Choose Directory from the Service pull-down menu. The FirstClass Directory lists all remote and local users and conferences on the StrateNET system.

2. If you do not want to view all of these objects, uncheck the Local, Remote, or Conferences checkboxes. For example, to view only Conferences, uncheck Local and Remote.




3. For Pattern, type all or part of the name you want to find.


For example, to find a user or conference whose first or last name is Roy, type "roy." FirstClass displays all the Directory objects whose names contain the specified text.



4. To view the résumé of any conference, user, or gateway in the Directory, highlight the name and click Résumé. Résumés are available only for StrateNET users who have completed the résumé form.

The Directory displays one of the following icons to identify individual entries.

 **Regular user:** A user connected to the StrateNET server through a network (also known as a network user).

 **Remote user:** A user connected to the FirstClass Server by modem (also known as a telecom user).

FirstClass software changes

Using FirstClass 3.5 you can:

- use new Directory features to search for names in FirstClass and address messages
- send blind carbon copies
- use the new address book to create personal mail lists and address forms
- include quoted text when you send a reply to a message
- check the spelling in your FirstClass messages and documents
- use the customizable toolbar for many tasks
- use drag-and-drop shortcuts to perform many tasks
- perform most commands more quickly using shortcut menus
- work offline, connecting only when you need to send and retrieve messages
- connect to FirstClass using a proxy server
- update your settings documents while you are working online
- customize the appearance of your FirstClass account with the 3D Look command



Conference: A user forum usually focused on a single topic.



Gateway: A piece of software that allows your server to exchange information with other communication systems.



Public mail list: A folder containing the names of users or conferences, or both. This list is created by your FirstClass administrator for easy addressing.

Addressing a message

FirstClass Client 3.5 allows you to address messages using the Directory, which is convenient if you are sending a message to several recipients. To use the Directory to address a message, follow these steps:

1. Open the message that you want to address, if it's not already open.
2. Choose Directory from the Service pull-down menu.
3. Select the name of the person to whom you are sending the message. (See the previous information about searching the Directory.)
4. Click To, Cc, or Bcc to insert the name into the message.

STRATENOTES is published 9 times a year, September through June except December, as part of Strateworks of the SIM Trainers' Network by the Center for Research on Learning, 1996-97, cost \$35.00. Permission to reproduce any or all parts of *Stratenotes* to support training activities is hereby given.

Contributors: Donald D. Deshler, Jean B. Schumaker,
B. Keith Lenz, Janet B. Roth

Editor: Julie Tollefson

Dr. Gordon Alley

Dr. Gordon Alley passed away on Sunday, February 16, 1997. As most of you know, Gordon was one of the key figures in establishing the Center for Research on Learning in 1977. His leadership and intellectual contributions were instrumental in laying the foundation for the Strategic Instruction Model. Without his influence and commitment to finding ways to more effectively teach adolescents with learning disabilities, the CRL would not have developed as it has.

The Gordon R. Alley Partnership Award, given annually by the CRL to outstanding educational leaders, stands as a lasting testament to the magnitude of his contributions and the fact that Gordon felt that the greatest thing that he could do was to be a helpful partner to others. He was a wonderful colleague and friend to all at the CRL.

The family suggests memorials to the First Presbyterian Church, Hospice Care of Douglas County, or the Gordon R. Alley Scholarship for students in special education at the KU Endowment Association, in care of Warren-McElwain Mortuary, 120 W. 13th Street, Lawrence, KS 66044, (913) 843-1120.

For those of you who know Gordon's wife, Eva, her address is 2743 Alabama, Lawrence, KS 66046.

Strateworks membership

This issue of *Stratenotes* has been sent to all trainers, active and inactive. Trainers must meet the following two criteria to maintain an active status:

1. **Attend an update training session every two years.** The CRL publishes four to six new instructional products every year. These are presented at each of the update sessions so that SIM Trainers can be on the cutting edge with the most current thinking and developments relative to strategic instruction. Trainers have several options for participating in update training sessions. Every year, the CRL hosts a national conference in Lawrence (this year it is July 10-12, 1997) and several regional meetings. During the 1996-97 academic year, regional meetings were held in October in St. Louis, Missouri; November in Rensselaer, New York; and February in Charleston, South Carolina, Las Vegas, Nevada, and Chicago, Illinois. Next year, we plan three regional conferences: the Northeast in the fall, the Far West in February, and the Southeast the first weekend in March.
2. **Subscribe to *Strateworks*.** *Strateworks* is a collection of different tools produced by the CRL to communicate with the SIM Network on a continuing basis:
 - *Stratenotes*—a newsletter designed to present ideas on current trends in education relevant to

strategic instruction as well as information about new material releases and training sessions (published nine times a year).

- *Strategram*—a publication aimed at practicing teachers that contains hands-on classroom implementation ideas (published six times a year).
- *StrateNET*—an electronic communications network that enables SIM Trainers to communicate with each other and with the CRL and to receive "hot-off-the-press" information electronically.
- *Stratellite Connection*—videotaped programs designed to show actual teaching demonstrations and to hear from SIM Trainers and CRL staff. (A limited number of free copies are available for study groups and active network trainers. Others can be purchased for \$15.00.)
- *StrateDirectory*—a listing of all trainers who complete the Directory Information Form. The form is available at update training meetings and in the back of the 1997 *StrateDirectory*.

The annual subscription rate for *StrateWorks* is only \$35.00. Send your check to the University of Kansas Center for Research on Learning, 3061 Dole, Lawrence, KS 66045.

StratePubs clarification

The 1997 *StratePubs* publication, which was mailed recently to active trainers, inadvertently omitted the full citation for one of the articles. "Learning Strategies: Tools for Learning to Learn in Middle and High Schools," by Brenda K. Oas, Jean B. Schumaker, and Donald D. Deshler, appeared as a chapter in *Secondary Education and Beyond: Providing Opportunities for Students with Learning Disabilities*. This book was published by the Learning Disabilities Association of America, 4156 Library Road, Pittsburgh, Pennsylvania 15234, in March 1995.

StratePubs, which is distributed to *Strateworks* members, is an annual publication featuring two recent articles of interest to SIM Trainers.

National Conference registration

A registration form for the National SIM Trainers Conference, which will be July 10-12, 1997, in Lawrence, Kansas, can be found on page 5 of this issue of *Stratenotes*. Please complete the form and return it to the Center for Research on Learning by May 15, 1997, to avoid a late fee.

The back of the form (page 6) describes our call for presentation proposals and provides a place for participants to tell us what strategies, routines, and topics they would like to see on the conference agenda and to request meetings with CRL staff members.

This issue also contains lodging and transportation information for the conference and summer workshops.

KU-CRL - Lodging and Transportation Information

Summer 1997 Meetings/Workshops - Lawrence, Kansas

HOUSING

Several hotels and motels have given us special rates for workshops this summer. When making reservations, **you must mention that you are attending the Center for Research on Learning Workshop** in order to receive these rates. Prices are quoted for single and double occupancy and do not include tax.

Christopher's House

(Bed & Breakfast)

643 Tennessee

(913) 841-9999

\$59 (Mon.-Thur.)

\$65 (Fri.-Sun.)

Continental breakfast during week, full breakfast on weekend.

Nine rooms, call early; 3 blocks west of Massachusetts Street.

Comfort Inn

740 Iowa

(913) 838-4242

Under construction

Days Inn

2309 Iowa

(913) 843-9100

\$52 May rate

\$66 Summer rate (Sun.-Thur.)

\$71 Summer rate (Fri.-Sat.)

Incl. deluxe continental breakfast, indoor pool, evening hospitality hour

Eldridge Hotel

(SIM Conference Hotel)

701 Massachusetts

(913) 749-5011

\$67-\$100

July SIM Meeting \$74, single or double occupancy

Halcyon House

(Bed & Breakfast)

1000 Ohio

(913) 841-0314

\$45.00-\$85.00

Price reflects single and double room rates. Lower rate means sharing a bath. Call early as only 9 rooms are available.

Hallmark Inn

730 Iowa St.

(913) 841-6500

Rates vary from \$47.95 to

\$70.95

Hampton Inn

2300 W. 6th St.

(913) 841-4994

\$60 flat rate

Holiday Inn Holidome

200 McDonald Drive

(913) 841-7077

\$79-\$89.00 for 1 to 4 people

Call for current rates. Ask about "Great rates"

Ramada Inn

2222 W. 6th St.

(913) 842-7030

\$54.00-\$74.00

Travelodge Motel

801 Iowa

(913) 842-5100

\$34.00-\$40.00

\$5 for each additional adult.

Westminster Inn

2525 W. 6th St.

(913) 841-8410

\$48.00-\$62.00

TRANSPORTATION

Plan to fly into Kansas City's Mid-Continent International Airport. Some travel agents will want to send you to Topeka, but transportation from the Kansas City Airport to Lawrence is much easier. The Kansas City Airport, located northeast of Lawrence, is approximately an hour's drive from Lawrence. You may want to rent a car or use one of the transportation services described below. If you are driving from the airport to Lawrence, take I-435 directed to Topeka and then I-70 west. Leave the turnpike at the east Lawrence exit if you are staying at the Christopher House, Eldridge Hotel, or the Halcyon House. For other hotels, the west Lawrence exit is more convenient.

The **A-1 City Cab Airport Shuttle Service** (call (800) 736-1090 or (913) 842-2432 for reservations). **You must make reservations at least one week in advance.** The cost is \$19 one way and \$38 round trip. The service makes 10 daily trips at intervals of an hour and fifteen minutes. The first trip begins at 8:30 a.m.; the last regular airport departure time is 11:00 p.m. The shuttle will deliver you to any address in Lawrence. However, it will pick up passengers only at the Eldridge Hotel, Days Inn Motel, Holidome, and the Kansas Student Union. **Be sure to mention the Center in order to get these rates.**

Rick's Airport Service (call (800) 331-6796 outside of Kansas or (913) 651-4649 in Kansas). This service provides door-to-door service 24 hours a day. The charge for one person is \$40 one way. Any additional riders are \$5. This may be a good alternative if you are traveling in a group or during irregular hours.

Within the city of Lawrence, taxicabs are available. Fares are between \$4 and \$7 depending on the distance of your ride. A-1 City Cab phone number is (913) 842-2432.

Registration Form

National SIM Trainers' Conference

July 10-12, 1997

Eldridge Hotel
Lawrence, Kansas

Name: _____ Social Security Number _____
(required)

Work Address: _____

Work Phone: _____

Home Address: _____

Home Phone: _____

I give permission for the CRL to include my name, address, and phone number in a listing to be distributed to conference participants. Yes No

How many previous National SIM Trainers' Conferences have you attended? _____

Please send mail to my ☐ Home ☐ Work Address

Registration Fee All 3 Days \$90.00	Registration Fee 2 Days \$70.00	Registration Fee 1 Day \$45
Thursday-Saturday July 10-12	<input type="checkbox"/> Thursday, July 10 <input type="checkbox"/> Friday, July 11 <input type="checkbox"/> Saturday, July 12 <i>Please check the days you plan to attend.</i>	<input type="checkbox"/> Thursday, July 10 <input type="checkbox"/> Friday, July 11 <input type="checkbox"/> Saturday, July 12 <i>Please check the day you plan to attend.</i>
Total Enclosed: \$ _____	Total Enclosed: \$ _____	Total Enclosed: \$ _____

Note: Add a \$10 late fee for registration after May 15, 1997

Make check payable to KU-CRL

Mail to Janet B. Roth
The University of Kansas
Center for Research on Learning
3061 Dole Center
Lawrence, KS 66045

*Your receipt for registration
will be available at the conference.*

Call for Presentations

National SIM Trainers' Conference

July 10-12, 1997

Eldridge Hotel
Lawrence, Kansas

We invite all of you who have designed great programs and materials to share your ideas with other SIM Trainers during the 1997 National SIM Trainers' Conference. We offer two options for sharing during the conference: one-hour presentations or a Poster Extravaganza session.

The poster session, which will be held in conjunction with Friday morning's continental breakfast, allows you to develop and share displays of such items as training materials, classroom pictures, videotapes, and student products.

If you would like to give a one-hour presentation or to participate in the Poster Extravaganza, please complete the application form below and return it by **May 1, 1997**, to KU-CRL, 3061 Dole, the University of Kansas, Lawrence, KS 66045.

Presentation

Title of Presentation: _____

Description: _____

(No more than 150 words; attach another page, if necessary.)

Poster Session

Title of Program: _____

Description: _____

(No more than 150 words; attach another page, if necessary.)

Conference Meetings

I would like to meet with the following CRL staff members:

Staff member:	Topic:
_____	_____
_____	_____
_____	_____

Strategies, routines, or topics I would like to have included on the conference agenda:

SIM Training Opportunities in 1997

July 22-26, 1997
(Tuesday-Saturday)

Strategic Instruction Model Workshop-Level I
University of Kansas Center for Research on Learning
Lawrence, Kansas

\$395

Teachers who have had no training in SIM or perhaps have been trained in only one or two strategies will benefit from this week. During the five days of training, teachers will become prepared to implement an Overview of Content Enhancement, one Content Enhancement Routine, and the following strategies: SLANT, Paraphrasing, Sentence Writing, Word Identification, Self Advocacy, and FIRST-Letter Mnemonics. Registration is due by May 2, 1997.

July 22-26, 1997
(Tuesday-Saturday)

Strategic Instruction Model Workshop-Level II
University of Kansas Center for Research on Learning
Lawrence, Kansas

\$395

This workshop will provide training for classroom teachers who already have been trained in SIM procedures and have taught some of the strategies. At this advanced training session, teachers will have a choice of strategies and routines from which to select. Participants may choose to enroll in the Writing Strategies (Sentence Writing, Error Monitoring, Paragraph Writing, etc.), Reading Strategies (Paraphrasing, Dissect, Visual Imagery, Self-Questioning), or the Content Enhancement Routines (Concept Mastery, Anchoring, and Comparison; Lesson, Unit, and Course Organizer; Survey, Clarifying, or Quality Assignment); or a combination of several types of routines and strategies. As a part of the registration process, teachers will make their selections and submit these with their completed registration form and payment for the workshop. Registration is due by May 2, 1997.

July 22-26, 1997
(Tuesday-Saturday)

Strategic Instruction Model Workshop-Content Enhancement
University of Kansas Center for Research on Learning
Lawrence, Kansas

\$395

This workshop will provide training for classroom teachers who are interested in learning the Content Enhancement Routines. These Content Enhancement Routines will include an Overview of SIM and at least seven of the following routines: Concept Mastery, Concept Anchoring, Concept Comparison, Lesson Organizer, Unit Organizer, Course Organizer, Survey, Clarifying, and Quality Assignment Routines. Registration is due by May 2, 1997.

July 28-August 1, 1997
(Monday-Friday)

Workshop for Potential SIM Trainers
University of Kansas Center for Research on Learning
Lawrence, Kansas

\$510

Participants in this workshop will be selected through an application process. Individuals who have been trained in the strategies and have implemented strategy instruction will be trained to be potential trainers. Teachers need to have implemented at least four strategies; supervisors and coordinators must have implemented at least two strategies with at least one student. Strategies are not taught at the workshop. The focus is on the training process. To become a certified trainer, a set of requirements must be met after the week of training. Applications are due by April 11, 1997.

Training Fee: Training fees cover the cost of materials provided with the training. Participants will be responsible for their own transportation, housing, and meals.

Applications or registration forms for training at the University of Kansas are available from Janet Roth, Training Coordinator, 3061 Dole Center, Lawrence, KS 66045, (913) 864-4780.

1996-97 Calendar of Events

February 27-March 1, 1997-Southeastern Region SIM Trainers' Update Meeting, Charleston, SC

May 28-31, 1997-Pedagogies for Diversity-Inclusive Teaching in the Secondary School Setting Workshop, Lawrence, KS

July 10-12, 1997-National SIM Trainers' Conference, Lawrence, KS

July 22-26, 1997-Strategic Instruction Model Workshop-Level I, Lawrence, KS

July 22-26, 1997-Strategic Instruction Model Workshop-Level II, Lawrence, KS

July 22-26, 1997-Strategic Instruction Model Workshop on Content Enhancement, Lawrence, KS

July 28-August 1, 1997-Workshop for Potential SIM Trainers, Lawrence, KS

Stratenotes

February 1997

In this Issue:

SCORE manual's format, content, appearance revised

StrateNET's new directory options

Registration form, call for presentations for 1997 National SIM Trainers Conference

Survey Routine now available

The Survey Routine (TRIMS) is now available for purchase from the University of Kansas Center for Research on Learning for \$8.00. This Content Enhancement Routine is designed to enable students to survey effectively different reading assignments (for example, chapters, books, or stories). It is a powerful tool for the general education teacher working with academically diverse classes. KU-CRL also offers the Survey Routine training packet for \$9.00.

University of Kansas

STRATENOTES Volume 5-Issue #5

CENTER FOR RESEARCH ON LEARNING

Institute for Research in Learning Disabilities

3061 Dole Center

Lawrence, Kansas 66045

FIRST CLASS