



STRATENOTES

A National Newsletter for SIM Trainers

Volume 4, Issue 3 - November/December, 1995

StrateNET Makes Connections

"Making Connections" was the theme of this summer's National Update Conference, and it is also a frame of mind here at the Center, as we work to ensure that all professionals associated with the Center are informed and involved. We consider the SIM Network to be an invaluable part of the Center, and our goal is to find all the means and methods, involving old and new technologies, that are effective in protecting this treasure, increasing its value for all who are associated with it, and ensuring its productive existence far into the 21st century.

We're sure you are aware that there are many ways through which we are trying to connect with you and enable you to connect with each other. Probably the most intimidating method of making connections is the computerized bulletin board system, StrateNET. We've noticed that it's intimidating because even some of the KU-CRL staff members are actively blocking any knowledge of this system, and some are just ignoring it, hoping it will go away! Even those staff members who are fairly well versed feel that complete understanding is an elusive state of mind, always just over the horizon. Before we give up, however, let's relate our own trepidation of this technology to our students' experiences in the classroom. Instead of accepting our technological disfunction, let's put to use our own strategies for learning.

Let's begin with a short overview. The StrateNET computer system involves the use of computer software called FirstClass, which is produced by a company named SoftArc, Inc. FirstClass was selected because it is one of the most user-friendly software packages available. Additionally, you can use it to access StrateNET from a Macintosh computer or from a Windows system, or from both. (A real life example of people who access StrateNET from both is a couple who access it from Macintosh computers at work and from a Windows system at home.) Another feature of FirstClass is that it provides users a limited gateway into the Internet without the need for a separate Internet account.

All Strateworks subscribers were mailed copies of the FirstClass software for both Macintosh and IBM compatible computers. In order to use StrateNET, you will need a computer, a modem, and a telephone, and you will need to install the appropriate version of FirstClass on your computer (i.e., install the Macintosh version on a Macintosh computer or the Windows version on a Windows system).

Instructions for Macintosh Users

To Install FirstClass Software in your Computer

(Instructions for Windows users are different. Call Wally for help at 913-864-4780)

1. Take the disk titled "FirstClass Client 2.6 for Macintosh", and place it in the computer. Open the disk by double clicking on it using the mouse button. You will see a window on your screen similar to the one pictured in Figure 1.

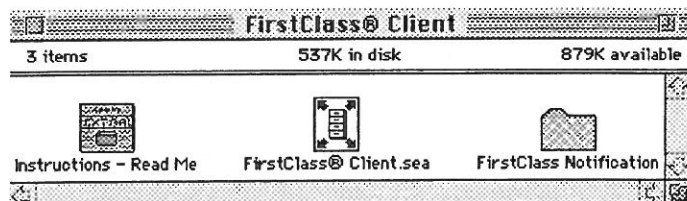


Figure 1

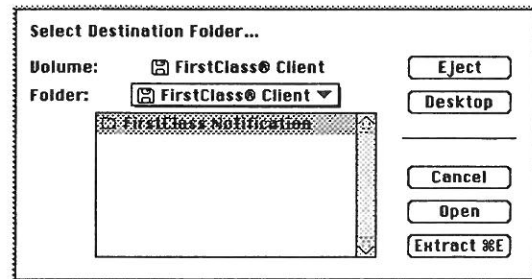



Figure 2



2. Double-click on the "*FirstClass® Client.sea*" icon, which looks like this: . You will see Figure 2.
3. Select the *Desktop* box in Figure 2 from the options by clicking once on it. The Macintosh Hard Disk will now be highlighted as shown in Figure 3.

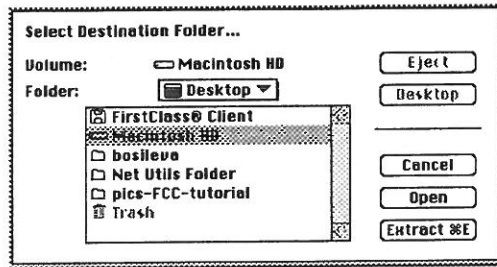


Figure 3

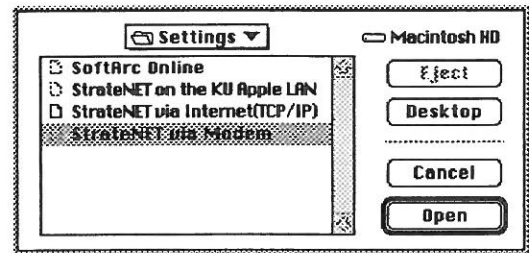

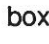


Figure 4

4. Select the *Extract* box in Figure 3 by clicking once on it. (This procedure will extract the FirstClass files and will place them on your *Desktop* in a folder called **FirstClass® Client**.) The window in Figure 3 will close, and Figure 1 will now be visible.
5. Close the *FirstClass® Client* disk by clicking once on the small box in the upper left corner of the window shown in Figure 1.
6. Drag the disk to the trash to eject it from your computer. Now the *FirstClass® Client* folder is installed on your *Desktop* and is visible on the screen.

After you have installed the FirstClass software you are almost ready to use StrateNET.

7. Open the folder called *FirstClass® Client* by clicking twice on it.
8. Start the FirstClass software by clicking twice on the "*FirstClass Client 2.6*" icon that looks like this . You will see a box that will ask you how you would like to connect to StrateNET. The options will look similar to those in Figure 4.
9. You have two options here.
 - Option 1:
If you have a modem, select "**StrateNET via Modem**" by clicking once on that choice. The words will become highlighted as in Figure 4.
 - Option 2 :
If your Macintosh is connected to the Internet, select "**StrateNET via Internet(TCP/IP)**" by clicking once on that choice. Those words will become highlighted. If you don't know whether or not your computer is connected to the Internet, please contact your network administrator (the person in charge of the computer network in your place of employment). If you do not have a network administrator and wish to find out if your computer is connected to the Internet, please call The KU-Center for Research on Learning at (913) 864-4780 and ask to speak with Wally.
(Ignore the other options presented in Figure 4)
10. After selecting the connection method to StrateNET, click the  box shown in Figure 4. You will be presented with the login screen in Figure 5.

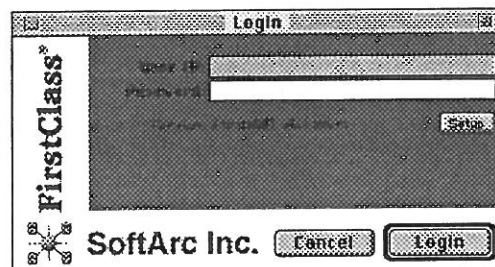



Figure 5

11. If your computer is connected to the Internet and you selected "**StrateNET via Internet**", all you need to do is single-click the  box in the *Login* window (Figure 5). You don't need a User ID or a password to register for the first time with the StrateNET system. Go to step #21 on p.4
If you selected "**StrateNET via Modem**" follow steps #12 through #20.

To Set Up the Modem with FirstClass

(Instructions for Windows users are similar. If you have any problems call Wally at 913-864-4780)

Follow the these steps to connect your modem to the FirstClass® software.

12. From the *Service* menu on the top of your screen select *Connection Setup* by stopping the cursor on *Service* and moving the cursor to *Connection Setup* while holding down on the mouse button. A sub-menu will pop out. From this sub-menu select *Modem* by stopping the cursor on that choice and releasing the mouse button as shown in Figure 6.

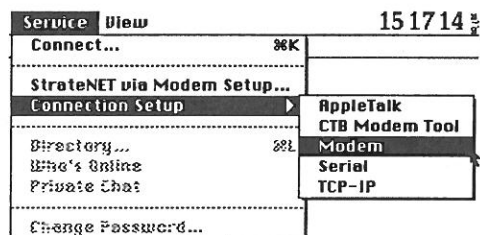


Figure 6

13. The Connection Setup Form for the Modem Connection File will be displayed. Figure 6 shows what it looks like.

Figure 7

14. In the **Connection** section, on the left hand side of Figure 7, you will need to select the type of modem that you have. To do this, put the cursor on the little arrow that points down in the box that corresponds to the *Modem* field, as in Figure 8. Click and hold down the mouse button.

Figure 8

Figure 9

A sub-menu will pop out with a list of modem types. Select the brand of modem that you have by moving the cursor up or down while holding down on the mouse button. Stop on the modem type that you have. Release the mouse button to make the selection. As an example, we have chosen Hayes 2400.MDM. This is because the brand of modem that we have is Hayes, and the speed of the modem is 2400. To find out the brand and speed of your modem, check the documentation that came with your modem. If your modem does not appear in the options, you should select Hayes 2400, Hayes 9600, or Hayes 14400, depending on the speed of your modem.

15. Next, put the cursor on the little arrow in the "Port" field as shown in Figure 9. If you have your modem connected to the Modem port on your Macintosh, select *Modem Port* in the *Port* sub-menu, using the same method of selection as the one used in selecting your modem type. Select *Printer Port* if you have your modem connected to the Printer port.
16. Next, put the cursor on the little arrow in the "Phone" field as shown in Figure 10. Select an item on the *Phone* sub-menu based on the type of phone line that you have. Select *Pulse* if you have a Rotary phone line, or *Tone* if you have Touch Tone phone line.

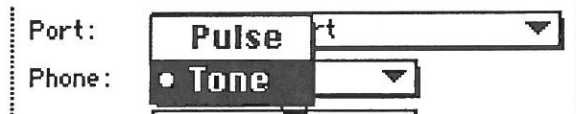


Figure 10

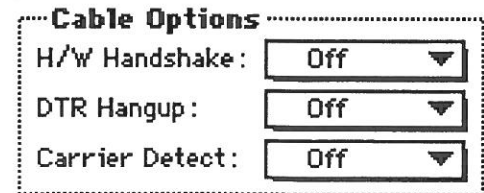


Figure 11



17. Next, determine whether your modem has an approved Hardware Handshaking Cable by reading the written documentation that accompanied your modem. If it does, go to the "Cable Options" and put the cursor on each of the arrows in the boxes labeled *H/W Handshake*, *DTR Hangup* and *Carrier Detect* in turn. Click the mouse and pull downward. You will see the word "On" appear in the box. At the end of this step, all three boxes should say "On". **If you do not have an approved Hardware Handshaking Cable, you should leave these turned Off, like in Figure 11.**
18. In the **Speed Options** box, the *Auto Speed* and *Baud Rate* sub-menus will have been set automatically when you select a modem. You should not change these sub-menus.
19. Click once on the  button. This will save your settings into your Modem Connection File.
20. You will now see the *Login* window, as in Figure 5. All you need to do now is click on the  button that is in the lower right corner in the *Login* window pictured in Figure 5.
21. The registration form will be displayed. It looks like the one in Figure 12:

Figure 12

22. Fill in the requested information starting with your first name. Type your first name in the box labeled "your first". To move to a different box or field, hit the "tab" key on your keyboard. Click once on the "Register" button when you have filled in all the boxes.
For "Requested UserID" type in letters or numbers that represent an easy-to-remember code. For example, you might type in your last name.
For "Requested password" type in letters or numbers that also are easy to remember. For example, you might type in your birth date. You will need to type in both your "UserID" and your "password" every time you want to log in to StrateNET.
23. A confirmation window will pop up on your screen that looks like Figure 13. Be sure to write down your UserID and password and put them in a safe place.

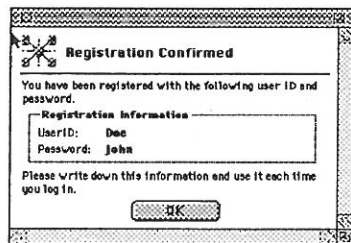


Figure 13

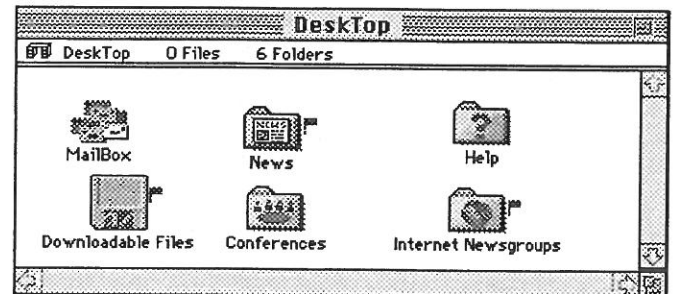


Figure 14

24. Click on the "OK" button one time and you will be connected to FirstClass. The FirstClass Desktop will appear on your screen. It looks like Figure 14.

You are ready to navigate on StrateNET. Stay tuned for more instructions !!!

What's New In StrateNET & Where to Look

Look in **NEWS** to find:

- KU-CRL Information (1-16)
 - History/Mission
 - SIM Training
 - SIM Components
 - Other Products
- Research Monographs Available
- Research Reports 1-75
- CRL Order Form(Manuals & Videos)
- Trainer's Order Form (Trainer's Packets)

1995/96 CALENDAR OF EVENTS

- January 26 & 27, 1996* - Hotel Sofitel, Minneapolis, MN, *North Central Regional Update Meeting*
- February 23 & 24, 1996* - Imperial Palace, Las Vegas, NV, *Farwest Regional Update Meeting*
- March 1 & 2, 1996- Sheraton-Charleston Hotel, Charleston, SC, *Southeast Regional Update Meeting*
- June 27, 28, & 29, 1996, Lawrence, KS, *National SIM Conference*

NORTH CENTRAL REGIONAL COMMITTEE INVITES YOU

We invite all of you who are ready for some discussion about training and SIM to join us in Minneapolis, January 26 and 27, 1996, for a great time "Making Connections." Our committee has been working throughout the summer and fall preparing for the conference, and we are excited at the prospect of seeing you!

The conference will be held at Hotel Sofitel, one of our area's loveliest hotels. We have negotiated a great room rate for conference participants for the two conference days and for several days before and after the conference! January 4, 1996 is the last date to get the special rate of \$65 per night at the hotel.

Don Deshler plans to be with us to present four new SIM programs, and we have planned additional training, time for socializing (and networking), great lunches, etc., etc., etc. And of course, the Minneapolis area is known for its theater scene—and the shopping extravaganza, the Mall of America. If you're not on our mailing list and would like more information, contact Shari Schindele (612-425-2997) or Janet Jones (612-825-2350) in Minneapolis or Janet Roth at the KU-CRL (913-864-4780).

The North Central Regional SIM Trainers'
Conference Committee

TIDBITS FROM TRAINERS

In November, one of the most exciting reports has come from Susan Woodruff from Muskegan, Michigan via StrateNET. She reports the following: "Our efforts in general education have been amazing. We've only taught DISSECT at this point. General education teachers have been extremely cooperative. The results we are seeing are incredible. Just to see the personality change in some of the students is thrilling. One student, Frank, is a repeating 9th grader. He failed almost everything last year, and while being a really nice kid, was getting very turned off. He was hesitant about doing the strategy, but at first appeared disinterested and a little hopeless. His word attack level was about 3rd grade, but comprehension was higher. In the small strategy instruction group, MaryAnn, his teacher, spent quite a bit of time with him. He became very involved and worked very hard. (He did not miss one class period!) He was reading at grade level, actually at 11th grade, when he went back to his regular 10th-grade English class. Mary Ann saw him in the library last week reading a book. She stopped and spoke with him, and he got this big grin on his face. He told her that he really



STRATENOTES is published 9 times a year, September through June except December, as part of the Strateworks Trainer's Network by the Center for Research on Learning, 1995-96, cost \$35.00. Permission to reproduce any or all parts of *Stratenotes* to support training activities is hereby given.

Authors: Donald D. Deshler, Jean B. Schumaker, & B. Keith Lenz
Editor: Eleanor Nelson

liked reading now. He was so pleased with himself. His English teacher could hardly believe the difference in attitude, performance, and ability. She is now referring other students for instruction. We are slowly, but surely, getting teachers to see how valuable this instruction is. And think of it - so far we have only taught ONE strategy. My only wish is that I had more time to devote to this. Up until the past 2 weeks I've spent 2-3 hours per day working with this project. Needless to say, I've gotten behind in my other work. But SIM work is truly productive work. I feel so good when I am involved with kids this way."

Mary Frances Luysterberg, SIM Trainer in the Hillsborough County Public Schools, Florida, reports that she publishes her newsletter, SIM NEWS, at least four times a year and sometimes five. She is now in the eighth year of the publication. All trained teachers receive a copy. She gives lots of classroom ideas, and every issue is dedicated to a theme of some sort. In the November 1995 issue, she provided a holiday worksheet, the game PENS BINGO which she developed, and a FIRST-LETTER word search of clue words. This issue is devoted to the use of Learning Strategies tickets. Mary provides a set of tickets, ideas about securing "prizes" and also some tips to aid in implementation in the classroom.

Please send your ideas and success stories to us so we may share them with others.

Congratulations Tes and Ginger! !!!

Tes Mehring from Emporia State University on being awarded the 1995 University Educator of the Year Award in Kansas.

At the national CLD conference in Chicago, IL during November, Ginger Blalock from the University of New Mexico was honored by CLD as one of four Professionals of the Year. This award is given for outstanding performance and commitment to individuals with learning disabilities as exhibited by professionals who are not special education classroom teachers.

NOTICE THE NEW LOOK

The strategy manuals are being given a bright new look with exciting-looking new covers. When you receive an order of manuals that does not look like your personal copy, realize that the insides are still mostly the same. When we print new copies of the manuals, sometimes only the covers are being changed. Thus far, Assignment Completion, Visual Imagery, and Error Monitoring have been printed with the new covers. Paired Associates will have the new cover when it comes out in January. When there are major changes made within the manuals, there will be a special notification in StrateNOTES. Please pass the word to other trainers who might not see this notice.

Training Tips for Training Visual Imagery

Here is an example of what StrateNET can do for you. Susan Woodruff wrote Jean Schumaker a message on StrateNET asking her to explain how she introduces the Visual Imagery Strategy to teachers. Below is Jean's reply.

To: Susan K- Woodruff

Hi Susan! I use the book "Master of the Game" by Sidney Sheldon. I tell the teachers to close their eyes and make a movie in their mind about what I read to them. Then I read the first paragraph. I stop and ask them to:

- Tell me the name of the place where this is. (Name the scene)
(They usually say "a ballroom" I push them to go further.) Where is this ballroom? (They usually say "in a mansion.") Where is this mansion? ("In Maine.")
Tell me what this mansion looks like. (Details about the scene)
(They describe the coast of Maine, rolling lawns, big white house with columns, etc.)
Let's go inside. Tell me what the ballroom is like.
(They describe gleaming wood floors, chandelies, heavy velvet drapes, orchestra, etc.)
- Tell me about the characters and the action taking place in the ballroom.
(They describe the ghosts, the dancers, what the dancers are wearing and doing, etc.)
- Tell me about Kate Blackwell. What does she look like, how old is she, what is she wearing?
(They describe her differently. Some will say she is young, dark hair, red dress. Others think she is old. Be sure to get at least two different descriptions.)

Then ask them to close their eyes again and continue creating their movie as you read. Read the next paragraph that describes Kate Blackwell.

- Ask them whether the scene is the same or a different scene. (It's the same scene.)
- Ask them whether their picture of Kate Blackwell changed. Draw out from the original describers what changed.

Then explain this is what their students will be doing. Reading, creating the backdrop or "scene" for the movie, adding the characters and action, reading more, determining whether the scene has changed, determining whether the characters have changed, creating more movie, etc.

I spend some time at this point discussing the following:

- Does everyone's movie have to be the same?(No) Why not? (Images need to be personalized because each person is creating his/her own meaning out of the reading.)
- Where do the pictures come from/what are they based on? (Prior knowledge)
- Where else do the pictures come from? (Some of the words in the passage like "ballroom" and "Cedar Hill House" and "Bar Harbour, Maine.") I spend a lot of time here having them identify these words and asking them where their descriptions like "chandeliers" came from. They say from their imaginations. I explain that is what we want the kids to do. I call these descriptions "elaborations" and say we'll be using that term throughout the training.
- What can we do as teachers if we know our students don't have the prior knowledge they need to make a picture of an upcoming reading? (Show them pictures in advance of the assignment.)
- Is it OK to make an incorrect picture, like some people made an incorrect picture of Kate Blackwell? (Yes. The most important thing is that the picture is changed continuously to correspond to what is known. If you don't know for sure, it's ok to guess.)
- I really take some time to clarify the difference between the "scene" and the "characters and action" at this point. I find if I don't do it here, they get mixed up later. I have resorted to making a chart on the overhead listing words that they came up with related to the scene and words related to the characters; that is, they supply the words and I make the lists using two headings ("scene" and "characters and action"). We talk about activities they can use to make the distinction clear to their students.

I hope this helps! Let me know how it goes next time. Jean

PLANS FOR REGIONAL UPDATES

Regional leaders have been making plans for update training sessions in each of the regions. Plans for these meetings are at various stages for the five regions. **Reserve money now to attend one of the meetings.** Overall information which you may need to help you make plans to attend one of the sessions is given below.

Region 2—South East Region
(AL, FL, GA, LA, MS, NC, SC, TN, VA,
Puerto Rico)

March 1 & 2, 1996 Sheraton-
Charleston Hotel,
Charleston, SC

Contact person:
Jerri Neduchal,
(407) 849-3500 ext. 5703
FDLRS, 434 N. Tampa Ave
Orlando, FL 32809

Region 3—North Central Region
(IL, IN, KY, MI, MN, ND, OH, SD, WI,
Manitoba, Ontario)

January 26 & 27, 1996 *
Hotel Sofitel,
Minneapolis, MN

Contact persons:
Shari Schindele, (612)425-2997
9902 93rd Ave, North
Maple Groove, MN 55369 or
Janet Jones, (612) 825-2350
230 Valley View Place
Minneapolis, MN 55419

Region 5—Far West
(AK, AZ, CA, CO, HI, ID, MT, NV, NM,
OR, UT, WA, WY, Alberta, British
Columbia, Saskatchewan, Yukon,
Northwest Territories)

February 23 & 24, 1996*
Imperial Palace,
Las Vegas, NV

Contact persons:
Joe Crank, (702) 739-3205
University of Nevada-Las Vegas
School of Education,
Las Vegas NV, 89154
or
Barbara Millikan,
or (503) 284-6140 (Home #)
3018 NE 38th Ave.
Portland, OR 97212

University of Kansas
STRATENOTES
CENTER FOR RESEARCH ON LEARNING
Institute for Research in Learning Disabilities
3061 Dole Center
Lawrence, Kansas 66045

FIRST CLASS