

# Stratenotes

*The University of Kansas Center for Research on Learning*

## SN Vol. 28, No. 3 | Jan./Feb. 2020 Feature Article

### Still Seeking Solutions to Educational Challenges: Where We've Been and Where We're Headed

*Michael Hock, Director of KUCRL, Sr. Research Scientist*

#### The Journey: A Brief and Incomplete History

More than 40 years ago, a group of talented KU researchers were funded by the Department of Education to establish a research institute that would focus on defining the characteristics of adolescents with learning disabilities (LD), their educational needs, and the instructional skills and tools teachers needed in order to improve achievement and social skill outcomes. The new research institute was called the *Institute for Research on Learning Disabilities* (IRLD) and was eventually recognized as the "Gold Standard" for research and intervention work for adolescents with LD. Research at the IRLD resulted in the development of Strategic Instruction Model (SIM™) and a nation-wide network of skilled professional developers (PDers) who supported implementation of the SIM. The IRLD and SIM were often seen as one-and-the-same by many practitioners and researchers. Today, the IRLD has evolved and is called the *Center for Research on Learning* (CRL). The name change reflects an effort to recognize that SIM was a viable model for a wide-range of students who struggle to learn and that the quest for educational challenges is broad and never-ending. [Read more](#)<sup>1</sup>

## SIM Announcements

The [2020 SIM Leadership Award](#)<sup>2</sup> Honoree is **Patty Kohler**, Co-Director of the Mashburn Center for Learning at the University of Central Arkansas.

### Congratulations to Patty!

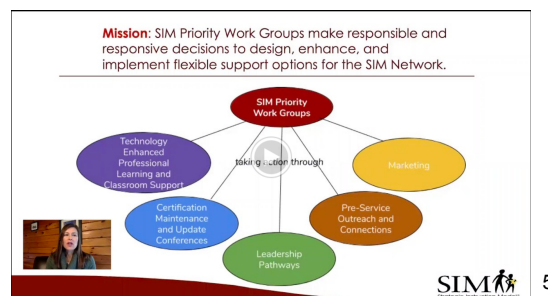


Patty received her award during the Arkansas update conference in January.

To find out more about the great work going on in Arkansas, **please check out the Fall issue of *The Mashburn Voice***<sup>3</sup>. The issue has stories from administrators and teachers about what's happening with SIM in Arkansas schools, an article about SIM Professional Developer Merica Howie, and a congratulations to Professional Developer Renee Calhoon for her promotion to Co-Director of the Mashburn Center. Great work to all in Arkansas!

### SIM Priority Work Group update from Jocelyn:

Since starting as director of professional development, I've been focusing on discovering what steps I could take in collaboration with others to move our network forward. Along with others at the CRL, Mona, Peony, and I very much appreciate learning from you how we can best meet your needs in facilitating professional learning related to SIM instructional tools and interventions. As expected, there are an abundance of aspirational ideas to move our SIM Network forward and improve the support the CRL provides to you, teachers, and students. I am extremely appreciative of the role each of you plays in our SIM community. To create focus and promote action, I launched several *SIM Priorities Work Groups*. Thank you to the SIM Professional Developers and others dedicated to SIM, such as ~~administrators and~~ current and former CRL researchers, who are serving critical roles on *SIM Priority Work Groups*. The mission of the *SIM Priority Work Groups* is to make responsible and responsive decisions to design, enhance, and implement flexible support options for the SIM Network. Click on the video below to see what the work groups have been up to and a draft of the purpose, mission, and vision statements! Also, please email me if you'd like to be involved! [jwashburn@ku.edu](mailto:jwashburn@ku.edu)<sup>4</sup>



## SIM: Tips & Tools

### SIM Checklists:

- SIM CHECKLISTS**
- Content Enhancement Routine Checklists**
- Clarifying Routine: Device Checklist (from manual)
  - Concept Anchoring Routine: Device Checklist (Research Version) | Implementation Checklist (Research Version) | Implementation Checklist (Coaching Version)
  - Concept Comparison Routine: Device Checklist (Research Version) | Implementation Checklist (Research Version) | Implementation Checklist (Coaching Version)
  - Concept Mastery Routine: Device Checklist (Research Version) | Implementation Checklist (Research Version) | Implementation Checklist (Coaching Version)
  - Course Organizer Routine: Device Checklist (from manual) | Implementation Checklist (Research Version)
  - Framing Routine: Device Checklist (Research Version) | Implementation Checklist (Research Version) | Implementation Checklist (Coaching Version)
  - Question-Exploration Routine: Device Checklist (Research Version) | Implementation Checklist (Research Version) | Implementation Checklist (Coaching Version)
  - Scientific Argumentation Routine: Implementation Checklist (Research Version)
  - Survey Routine: Device Checklist (from manual) | Implementation Checklist (Research Version)
  - Teaching Cause and Effect Routine: Implementation Checklist (Research Version)
  - Unit Organizer Routine: Device Checklist (Coaching Version) | Device Checklist (Research Version) | Implementation Checklist (Coaching Version)
  - Vocabulary Lfing Routine: Device Checklist (Research Version)
- Learning Strategies Checklists**

<https://simville.ku.edu/sim-checklists><sup>6</sup>

We would like to have your thoughts on the new checklist forms. Please try them out and email us with your comments at [simpd@ku.edu](mailto:simpd@ku.edu)<sup>7</sup>

## Powtoons:



8

## [Powtoon - TEACHING DECISION-MAKING FOR SUCCESS IN SCHOOL & EVERYDAY LIFE](#)<sup>8</sup>



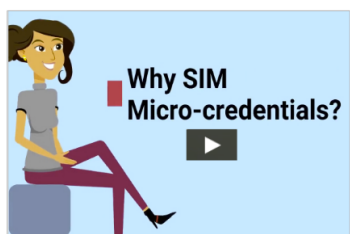
9

## [The Inference Strategy: An Overview for Educators](#)<sup>9</sup>



10

## [You Can! With SIM Micro-credentials](#)<sup>11</sup>



12

## [Why SIM Micro-Credentials](#)<sup>13</sup>

### SIM Stats in 2019

By kucrladmin | Updated: Aug 26, 2019, 4:33 p.m.

Slideshow ☒ Movie

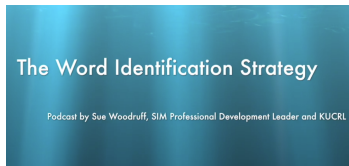


14

## [SIM Stats in 2019 \(Aug\)](#)<sup>15</sup>



16

Addition Within 20: [Addition Within 20](#)<sup>17</sup>**Podcasts:**[Word ID overview podcast \(Sue Woodruff\)](#) <sup>18</sup>

StrateNotes Updated: Feb. 21, 2020

**Editors:**

Peony Allen, Mona Tipton, Jocelyn Washburn

STRATENOTES is published six times a year by the University of Kansas Center for Research on Learning as part of Strateworks for the International Professional Development Network. Publication period 2018–2019; cost \$50.00. Permission to reproduce any or all parts of Stratenotes to support professional development activities is hereby given.

The University of Kansas prohibits discrimination on the basis of race, color, ethnicity, religion, sex, national origin, age, ancestry, disability, status as a veteran, sexual orientation, marital status, parental status, gender identity, gender expression and genetic information in the University's programs and activities. The following person has been designated to handle inquiries regarding the non-discrimination policies: Director of the Office of Institutional Opportunity and Access, [IOA@ku.edu](mailto:IOA@ku.edu), 1246 W. Campus Road, Room 153A, Lawrence, KS 66045, 785.864.6414, 711 TTY.

Contributors to this edition: Peony Allen, Janet Atallah, Renee Calhoon, Mike Hock, Patty Kohler, Mona Tipton, Jocelyn Washburn

Click here to go to the [StrateNotes/Strategram Archives](#)

- Links on this page:
- [https://simville.ku.edu/sites/simville.ku.edu/files/docs/SIMville/CRL%20Org%20Article%20for%20Feb%202020%20SN\\_FINAL.pdf](https://simville.ku.edu/sites/simville.ku.edu/files/docs/SIMville/CRL%20Org%20Article%20for%20Feb%202020%20SN_FINAL.pdf)
  - <https://simville.ku.edu/sites/simville.ku.edu/files/docs/SIMville/PKohlerAwardBook8.5x11.pdf>
  - <https://drive.google.com/file/d/1exf8iaGtPlQz8wMLrAiSruDuB8-FLsch/view>
  - [jwashburn@ku.edu](mailto:jwashburn@ku.edu)
  - <https://drive.google.com/open?id=1dUllmDxa33FyzUvSJfjK6vJF1aJS0Y>
  - <https://simville.ku.edu/sim-checklists>
  - [simpd@ku.edu?subject=Feedback%20on%20checklists](mailto:simpd@ku.edu?subject=Feedback%20on%20checklists)
  - <https://www.powtoon.com/online-presentation/ccnzoW8Qm2B/teaching-decision-making-for-success-in-school-everyday-life/?mode=movie&wvideo=ckuy27dysh>
  - <https://www.powtoon.com/online-presentation/ftazrxecWon/the-inference-strategy-overview/?mode=movie#/>
  - <https://www.powtoon.com/online-presentation/eiut4D96zi2/sim-micro-credentials/?mode=movie#/>
  - <http://www.powtoon.com/online-presentation/eiut4D96zi2/sim-micro-credentials/?mode=movie#/>
  - <https://www.powtoon.com/online-presentation/bfNoGDEiy2v/why-micro-credentials/?mode=movie#/>
  - <http://www.powtoon.com/online-presentation/bfNoGDEiy2v/why-micro-credentials/?mode=movie#/>
  - <https://www.powtoon.com/online-presentation/epxsjcjGVWm/sim-stats-in-2019/?mode=movie#/>
  - <http://www.powtoon.com/online-presentation/epxsjcjGVWm/sim-stats-in-2019/?mode=movie#/>
  - [http://www.powtoon.com/online-presentation/bRXVxLKGFel/addition-within-20-revised/?mode=movie&fbclid=IwAR3HVuXPf-1q-B-5dhE4vR2ePP7Ev7m79wwZFLGgZs-fe\\_eFi5mcEVhtpnc](http://www.powtoon.com/online-presentation/bRXVxLKGFel/addition-within-20-revised/?mode=movie&fbclid=IwAR3HVuXPf-1q-B-5dhE4vR2ePP7Ev7m79wwZFLGgZs-fe_eFi5mcEVhtpnc)
  - [https://www.powtoon.com/online-presentation/bRXVxLKGFel/addition-within-20-revised/?mode=movie&fbclid=IwAR3HVuXPf-1q-B-5dhE4vR2ePP7Ev7m79wwZFLGgZs-fe\\_eFi5mcEVhtpnc](https://www.powtoon.com/online-presentation/bRXVxLKGFel/addition-within-20-revised/?mode=movie&fbclid=IwAR3HVuXPf-1q-B-5dhE4vR2ePP7Ev7m79wwZFLGgZs-fe_eFi5mcEVhtpnc)
  - <https://vimeo.com/277650636/44d51a7f3f>

**Contact The Strategic Instruction Model (SIM)**[simpd@ku.edu](mailto:simpd@ku.edu) 785-864-0626

The University of Kansas

Center for Research on Learning 1122 West

Campus Road, Room 708 Lawrence, KS 66045



The University of Kansas [prohibits discrimination](#) on the basis of race, color, ethnicity, religion, sex, national origin, age, ancestry, disability, status as a veteran, sexual orientation, marital status, parental status, gender identity, gender expression, and genetic information in the university's programs and activities. Retaliation is also prohibited by university policy. The following persons have been designated to handle inquiries regarding the nondiscrimination policies and are the Title IX coordinators for their respective campuses: Director of the Office of Institutional Opportunity & Access, [IOA@ku.edu](mailto:IOA@ku.edu), Room 1082, Dole Human Development Center, 1000 Sunnyside Avenue, Lawrence, KS 66045, 785-864-6414, 711 TTY (for the Lawrence, Edwards, Parsons, Yoder, and Topeka campuses); Director, Equal Opportunity Office, Mail Stop 7004, 4330 Shawnee Mission Parkway, Fairway, KS 66205, 913-588-8011, 711 TTY (for the Wichita, Salina, and Kansas City, Kansas medical center campuses).

## Where is SIM Happening in the Field?



2020 ARKANSAS SIM UPDATE CONFERENCE



2020 FLORIDA SIM UPDATE CONFERENCE

### Purchase SIM Materials



Does the school you're working with need a quote for materials? Click here for the most recent copy of the [KUCRL order form](#)

### Upcoming SIM Events

- March 17-18, 2020**  
 Southeast Regional SIM Update Conference  
 Charlotte/Concord, NC
- March 30 - May 1, 2020**  
 Webinar Series: A Virtual Community of Practice to Support Virtual Coaching with SIM™ Interventions
- Apr. 6 - May 4, 2020**  
 Spring Virtual SIM Update Conference
- June 17-18, 2020**  
 Upper Midwest SIM Update Conference  
 St. Cloud, MN
- Summer 2020**  
 Potential Professional Developer Institutes - dates and times TBA