

Stratenotes

The University of Kansas Center for Research on Learning

SN Vol. 34, No. 1 | Sept./Oct. 2025

Featured Article: Higher Order Thinking and Reasoning (HOTR) Graphic Organizers to Support Essay Writing

by Janis Bulgren, Ph.D., Research Professor Emerita

SIM News

- Join us online in October for the **final SIM Update Conference of 2025! [Fall Virtual Conference](#) - Oct. 13- Nov. 13**
- Join us for a **[FREE online learning conversation](#)** to talk about SIM - Oct. 16, 4:00 pm EST
- Look for CRL Co-Director, Jocelyn Washburn (breakout session), and SIM Professional Developer, Michael Kennedy (keynote session), at the **[Virginia CEC Conference](#) Nov. 5-7, in Virginia Beach.**
- Check out [Episode 13 of Sold a Story by APM Reports: "The List"](#) — a powerful look into why many evidence-based reading programs don't make it onto EdReports, state-approved reading lists, or HQIM. ~ If you're curious how SIM instructional tools fit into the bigger picture, [discover how they align with other programs, strategies, and initiatives](#) to support effective instruction.
- We're in the process of adding the *Teaching Content to All: Evidence-based Inclusive Practices in Middle and Secondary Schools* (Lenz, Deshler, & Kissam, 2003) book to [KU ScholarWorks](#). This will make the book available as a free digital download. Among other uses, Pre-Service SIM Professional Developers may want to use this book as a course reading.
- KU CRL Researchers are working with educators in Montana and Virginia this year on the [iSTAR Grant Project](#).
- KU CRL Researchers are still looking to partner with a few more schools for the KU WRITE-APLM



Are you looking for support with writing instruction and assessment?

We are looking for middle school teachers to work with our research project next school year!

You will receive:

- Automated scoring of student writing product
- Readiness assessments
- Coaching tools
- Instructional recommendations
- Writing interventions
- Technology Tools



Participation includes professional development, coaching, pre/post assessments, and progress monitoring...and we will pay an honorarium.

Interested in learning more?

Contact us today: aplm@ku.edu

The University of Kansas does not discriminate in any employment practice, education program or educational activity.

grant project. Please email aplm@ku.edu if you know of anyone who might be interested.

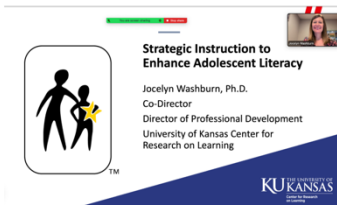
Reminders:

- [Report your SIM PD work](#) - We use this information to help us apply for grants and to share the impact SIM is having around the world. This is especially important right now with everything that is happening in the broader landscape of US education.
- [Update your StrateDirectory information](#) so that others in the network can find you. That is also where you let us know if you are interested in being contacted with referrals for PD in your area.

SIM in the Field

- SIM Professional Developer Cathleen Beachboard (VA) recently published an article entitled "[3 Ways to Boost Students' Motivation to Learn](#)" in *Edutopia*. She connects student-to-student feedback using *Glows and Grows* to motivation for learning.
- Jocelyn Washburn, presented for the Virginia Joint Coalition for Learning Disabilities and Literacy (VJCLDL) on Sept. 16 about using Strategic Instruction to Enhance Adolescent Literacy.
- SIM Professional Developers, Michael Faggella-Luby and Judith Fontana presented at the VBIDA Virtual Conference on Sept. 27.

SIM in the Field



KU CRL Researcher, Jocelyn Washburn, presented for a group from the Virginia Joint Coalition for Learning Disabilities and Literacy on Sept. 16.



SIM at School



My Xtreme Reading class is off and running! Here's a picture of their little book stacks I made for them as we start independent reading today!
~ Heather (IL)



- Heather in Illinois shared, "My Xtreme Reading class is off and running! Here's a picture of their little book stacks I made for them as we start independent reading today!"



KU CRL Researchers, Suzy Myers and Bonnie Palasak, joined SIM PDer, Kami Heinz for a tour of Glacier National Park after a day of PD.

SIM Resources

- [2025 SIM One-Page Flyer](#)
- [Handout](#) with quick links to SIM resources (crosswalks and websites)

Strategic Instruction Model

What is SIM?

For nearly 50 years, the University of Kansas Center for Research on Learning (KU CRL) has led research on adolescent learning.

SIM, developed by KU CRL, is a research-based framework that improves academic success, especially for students struggling with reading, writing, and learning. It equips teachers with strategies to deliver clear, structured, and engaging instruction, making learning accessible for all students, including those with learning disabilities.

What does SIM offer?

Content Enhancement Routines: help teachers organize and present critical content in a way that is accessible and memorable. These routines use teaching tools designed to make learning more effective and applicable.

Learning Strategies: equip students with the skills they need to learn content successfully, targeting areas essential for academic and career success, from late elementary to post-secondary levels.

Fusion Reading: a two-year supplemental course typically used with students in grades six through twelve, reading two or more years below grade level (minimally at the third-grade level).

Xtreme Reading: a one-year supplemental course typically used with students in grades six through twelve, reading two or more years below grade level (minimally at the fourth-grade level).

SIM

SIM, commonly referred to as "Kansas Strategies," has created many strategies popular in today's classrooms, including:

- DISSECT
- COPS
- PIRATES
- RAP
- SLANT

Benefits for Teachers:

Structured Lesson Plans: Detailed, easy-to-follow lesson structures that save time and help stay organized.

Flexible and Adaptive: Can be tailored to suit diverse classrooms, ranging from struggling to advanced students.

Professional Development: Continuous teacher support, including training, resources, and classroom implementation assistance.

Immediate Impact: Teachers see immediate improvements in student engagement and comprehension.

Scan or visit sim.ku.edu for more information

April 24, 2025

<div> <div>Let's Talk About SIM Lunch & Learn</div> <div> </div> </div>	
Topic	SIM Website Link
A Crosswalk: High-Leverage Practices (HLPs) with Disabilities	https://sim.ku.edu/sites/sim/files/documents/Resources/FINAL%20HLP%20and%20SIM%20Crosswalk%202025.pdf
A Crosswalk: The Marzano 9 and Strategic Instruction Model (SIM) Instructional Tools and Interventions	https://sim.ku.edu/sites/sim/files/documents/Resources/Marzano%20and%20SIM%20Crosswalk%202025-1.pdf
A Crosswalk: Advancement Via Individual Determination (AVID) and Strategic Instruction Model (SIM) Instructional Tools and Interventions	https://sim.ku.edu/sites/sim/files/documents/Resources/AVID%20and%20SIM%20Crosswalk%202025-1.pdf
Current SIM Events & Online Professional Learning Opportunities	https://sim.ku.edu/sim-events
SIM Microcredentials	https://sim.ku.edu/sim-micro-credentials
SIM Website	https://sim.ku.edu
Brochures for A SIM Overview, Learning Strategies, Content Enhancement Routines, The Writing Strategies, Higher Order Thinking and Reasoning Routines, & The Math Series	https://sim.ku.edu/sim-brochures
Integrating SIM with Other Programs, Strategies, and Initiatives	https://sim.ku.edu/sim-alignment-other-programs-strategies-and-initiatives

Upcoming SIM Events:

SIM Events for PDers and Specialists

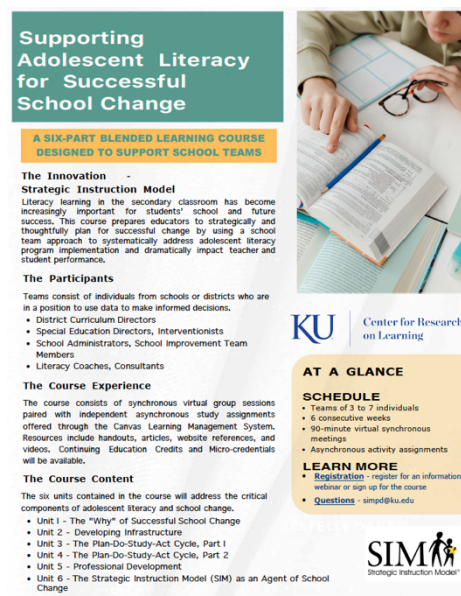
- Oct. 13- Nov. 13 - [Fall Virtual SIM Conference](#)
- Oct. 16 - [FREE online learning conversation](#).

New Course: Supporting Adolescent Literacy for Successful School Change

- Is your school team looking for a course in adolescent literacy to dramatically impact teacher and student performance? We have a course for that!
- Our online learning course, Supporting Adolescent Literacy for Successful School Change, is a six-part course designed to support school teams in implementing a systematic approach to adolescent literacy using evidence-based learning tools. Follow the link above for more information and to register today!

SIM Online PD Classes for educators (self-paced courses on Canvas, with follow-up coaching time)

- Content Enhancement Routines:
 - [Cross-Curricular Argumentation Routine](#)
 - [Framing Routine](#)
 - [Unit Organizer Routine](#)
- Learning Strategies:
 - [Fundamentals of Paraphrasing and Summarizing Strategy](#)
 - [The Inference Strategy](#)
 - [The Paragraph Writing Strategy](#)
 - [Possible Selves Strategy](#) (1st or 2nd edition)
 - [Sentence Writing Strategies \(Fundamentals and Proficiency\)](#)



The flyer for the 'Supporting Adolescent Literacy for Successful School Change' course is divided into several sections. At the top, it features the course title in a green box. Below this, a yellow box states 'A SIX-PART BLENDED LEARNING COURSE DESIGNED TO SUPPORT SCHOOL TEAMS'. The 'The Innovation' section describes the Strategic Instruction Model and its importance in secondary classrooms. 'The Participants' section lists roles like District Curriculum Directors and School Administrators. 'The Course Experience' details synchronous virtual sessions and asynchronous study assignments. 'The Course Content' lists six units, including 'The Why' of the model and 'The Plan-Do-Study-Act Cycle'. On the right, a photo shows hands working with documents. The bottom right features the KU Center for Research on Learning logo, a 'SIM' logo, and a 'SIM@' logo.

Supporting Adolescent Literacy for Successful School Change

A SIX-PART BLENDED LEARNING COURSE DESIGNED TO SUPPORT SCHOOL TEAMS

The Innovation - Strategic Instruction Model
Literacy learning in the secondary classroom has become increasingly important for students' school and future success. This course prepares educators to strategically and thoughtfully plan for successful change by using a school team approach to systematically address adolescent literacy program implementation and dramatically impact teacher and student performance.

The Participants
Teams consist of individuals from schools or districts who are in a position to use data to make informed decisions.
• District Curriculum Directors
• Special Education Directors, Interventionists
• School Administrators, School Improvement Team Members
• Literacy Coaches, Consultants

The Course Experience
The course consists of synchronous virtual group sessions paired with independent asynchronous study assignments offered through the Canvas Learning Management System. Resources include handouts, articles, website references, and videos. Continuing Education Credits and Micro-credentials will be available.

The Course Content
The six units contained in the course will address the critical components of adolescent literacy and school change.
• Unit 1 - The "Why" of Successful School Change
• Unit 2 - Developing Infrastructure
• Unit 3 - The Plan-Do-Study-Act Cycle, Part 1
• Unit 4 - The Plan-Do-Study-Act Cycle, Part 2
• Unit 5 - Professional Development
• Unit 6 - The Strategic Instruction Model (SIM) as an Agent of School Change

AT A GLANCE

SCHEDULE
• Teams of 3 to 7 individuals
• 6 consecutive weeks
• 90-minute virtual synchronous meetings
• Asynchronous activity assignments

LEARN MORE
• [Registration](#) - register for an informational webinar or sign up for the course
• [Questions](#) - simpd@ku.edu

KU Center for Research on Learning

SIM
Strategic Instruction Model

SIM@
Strategic Instruction Model

Follow SIM@ on: [Facebook](#) | [Instagram](#) | [LinkedIn](#)

KU Center for Research on Learning
1200 Sunnyside Ave, Haworth 3107
Lawrence, Kansas 66045
simpd@ku.edu
785-864-0626

The University of Kansas prohibits discrimination on the basis of race, color, ethnicity, religion, sex, national origin, age, ancestry, disability, status as a veteran, sexual orientation, marital status, parental status, gender identity, gender expression, and genetic information in the university's programs and activities. Retaliation is also prohibited by university policy. The following persons have been designated to handle inquiries regarding the nondiscrimination policies and are the Title IX coordinators for their respective campuses: Associate Vice Chancellor for the Office of Civil Rights and Title IX, civilrights@ku.edu, Room 1082, Dole Human Development Center, 1000 Sunnyside Avenue, Lawrence, KS 66045, 785-864-6414, 711 TTY (for the Lawrence, Edwards, Parsons, Yoder, and Topeka campuses); Director, Equal Opportunity Office, Mail Stop 7004, 4330 Shawnee Mission Parkway, Fairway, KS 66205, 913-588-8011, 711 TTY (for the Wichita, Salina, and Kansas City, Kansas medical center campuses).

The University of Kansas is a public institution governed by the Kansas Board of Regents.