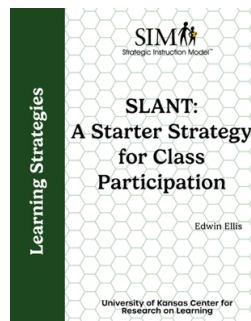

Featured Article: *Making Learning Visible with SIM*, Mary Black & Jocelyn Washburn

John Hattie, Director of the Melbourne Educational Research Institute at the University of Melbourne, Australia, presented his groundbreaking meta-analyses study in his first book *Visible Learning for Teachers* (2009). The Visible Learning research synthesizes findings from 1,500 meta-analyses of 90,000 studies involving 300 million students into what works best in education. The meta-analyses found that of the six groups of factors influencing successful learning in schools – the student, home, school, teacher, curricula and teaching – teachers seemed to have the strongest in-school effect. In 2023, Dr. Hattie published *Visible Learning: The Sequel* informed by more than 2,100 new meta-analyses about achievement drawn from more than 130,000 studies and conducted with the participation of more than 400 million students aged three to twenty-five, mainly from developed countries. It confirmed that certain high impact factors are still the most important when it comes to student learning. The factors (or influences on learning) also indicate the positive effect of teachers who focus on the impacts of their teaching and work together with other educators to critique their ideas about impact – about what was taught well, who was taught well and the size of the improvement. [Click here to read the full article](#)

SIM News

- You can now order the Content Enhancement Routines through the [KU CRL Online Store](#).
- **SIM manuals are getting new covers!** The first release of the new cover is on the new *SLANT Strategy, Second Edition*, available for free download in the [KU CRL Online Store](#).



- Join us for a **FREE virtual SIM Learning Together talk!**

*Let's Talk About SIM
Learning Together*

6

The Strategic Instruction Model
The University of Kansas Center for Research on Learning


Where: Online
Date & Time: June 4th, 4:00 – 5:00 PM EDT

Zoom Meeting Link: <https://kansas.zoom.us/j/82114334463>
Passcode: 414946

Agenda

- MTSS (Multi-Tiered System of Support)
- HOTR (Higher Order Thinking & Reasoning CERs)
- Generalization Support Ideas
- Q & A Session on SIM

RSVP



<https://forms.gle/Pa56t5aTQdGargMA>

Upcoming dates:

- **June 4, 2025** - 1:00 pm EST
 - For our next Learning Together session, we plan to cover the following topics: MTSS, generalization support ideas, HOTR, or anything else you would like to talk about.

Sign up for the June 4 session today and/or suggest other discussion ideas at: <https://forms.gle/74JvCmmQtFMsFueT9>

- **July 15, 2025** - 3:00 pm EST
- **Oct. 16, 2025** - 4: 00 pm EST

SIM in the Field

The 2025 Spring Virtual SIM Conference wrapped up on April 30th and May 1st with a fun group of educators. So great to see so many of you online from all over the nation!

Where are you located?
Are you certified in CER, LS, or both?
What's something you are looking forward to?



THE UNIVERSITY OF KANSAS
Center for Research on Learning



- **KU researchers are conducting statewide assessment to inform literacy improvement among Kansas students.** About 1 in 3 Kansas students aren't meeting basic reading benchmarks. KU researchers are traveling the state to find out why — partnering with educators and families to better understand what students need. Their findings could shape future solutions.
- Publications by KU CRL Staff and SIM Network Members:
 - Myers, S., Washburn, J., Rowland, A., & Smith, S. (2025). Developing an adaptive professional learning model: Educator insights on their infrastructure. *Teacher Development*. <https://doi.org/10.1080/13664530.2025.2511739>
- We know many of you attend and present at educational conferences around the U.S. We monitor this [list of conferences](#) that KU CRL Researchers or SIM PDers might attend or submit presentation proposals to in order to spread the word about SIM. Please feel free to check it out and let us know if there are conferences that we should consider adding. Additionally, we'd love to know if you're presenting anywhere. We are always happy to keep up with what is happening for our network members!
- Have an idea for a [SIM StoryCorps](#) to highlight your story with SIM? please feel free to share it simpd@ku.edu

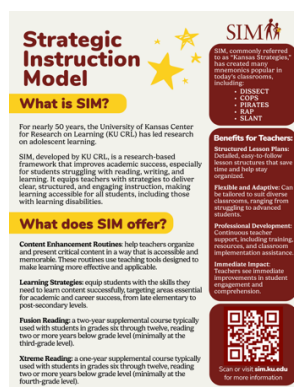
SIM Resources & Reminders

Reminders:

- [Update your StrateDirectory information](#) so that others in the network can find you. That is also where you let us know if you are interested in being contacted with referrals for PD in your area.
- [Report your SIM PD work](#) - We use this information to help us apply for grants and to share the impact SIM is having around the world. This is especially important right now with everything that is happening in the broader landscape of US education.

Resources:

- **2025 SIM One-Page Flyer**



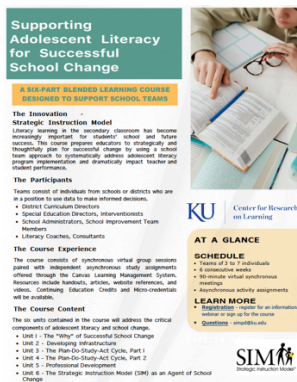
- [Handout from the April 24, SIM Lunch & Learn](#) - with quick links to SIM resources (crosswalks and websites)

April 24, 2025

 	
Topic	SIM Website Link
A Crosswalk: High-Leverage Practices (HLPs) with Disabilities	https://sim.ku.edu/sites/sim/files/documents/FTAL%20HLP%20and%20SM%20Crosswalk%202020-1.pdf
A Crosswalk: The Marzano 9 and Strategic Instruction Model (SIM) Instructional Tools and Interventions	https://sim.ku.edu/sites/sim/files/documents/FTAL%20Marzano%20and%20SIM%20Crosswalk%202020-1.pdf
A Crosswalk: Advancement Via Individual Determination (AVID) and Strategic Instruction Model (SIM) Instructional Tools and Interventions	https://sim.ku.edu/sites/sim/files/documents/FTAL%20AVID%20and%20SIM%20Crosswalk%202020-1.pdf
Current SIM Events & Online Professional Learning Opportunities	https://sim.ku.edu/sim-events
SIM Microcredentials	https://sim.ku.edu/sim-micro-credentials
SIM Website	https://sim.ku.edu
Brochures for A SIM Overview, Learning Strategies, Content Enhancement Routines, The Writing Strategies, Higher Order Thinking and Reasoning Routines, & The Math Series	https://sim.ku.edu/sim-brochures
Integrating SIM with Other Programs, Strategies, and Initiatives	https://sim.ku.edu/sim-alignment-other-programs-strategies-and-initiatives

Upcoming SIM Events:

- **SIM Update Conferences** for PDers and Specialists
 - June-Oct. - [CLLI](#) for potential professional developers
 - October, 2025 - Fall Virtual SIM Conference
- **New Course: [Supporting Adolescent Literacy for Successful School Change](#)**
 - Is your school team looking for a course in adolescent literacy to dramatically impact teacher and student performance? We have a course for that! Our online learning course, Supporting Adolescent Literacy for Successful School Change, is a six-part course designed to support school teams in implementing a systematic approach to adolescent literacy using evidence-based learning tools. Follow the link above for more information and to register today!



Supporting Adolescent Literacy for Successful School Change

A SIX-PART BLENDED LEARNING COURSE DESIGNED TO SUPPORT SCHOOL TEAMS

The Intervention
Strategic Instruction Model

Literacy learning is the universal classroom goal because it is the foundation for all other learning. The course provides educators with the knowledge and skills to implement a systematic approach to adolescent literacy using evidence-based learning tools. The course is designed to support school teams in implementing a systematic approach to adolescent literacy using evidence-based learning tools.

The Participants
Teams consist of individuals from schools or districts who are in a position to use data to make informed decisions.

- District Curriculum Directors
- Special Education Directors, Interventionists
- School Administrators, School Improvement Team Members
- Literacy Coaches, Consultants

The Course Experience
The course consists of synchronous virtual group sessions paired with asynchronous study assignments delivered through the Canvas Learning Management System. Resources include handbooks, articles, website references, and videos. Continuing Education Credits and Micro-credentials will be available.

The Course Content
The six units contained in the course will address the critical components of adolescent literacy and school change.

- Unit 1 - The "Why" of Successful School Change
- Unit 2 - Developing Infrastructure
- Unit 3 - The Plan-Do-Study-Act Cycle, Part 1
- Unit 4 - The Plan-Do-Study-Act Cycle, Part 2
- Unit 5 - Professional Development
- Unit 6 - The Strategic Instruction Model (SIM) as an Agent of School Change

AT A GLANCE

SCHEDULE

- Teams of 3 to 7 individuals
- 6 synchronous sessions
- 6 asynchronous sessions
- 6 synchronous sessions
- 6 asynchronous sessions

LEARN MORE

- Register today - register for an informational session or sign up for the course
- Questions - email@sim.ku.edu

KU Center for Research on Learning

SIM Strategic Instruction Model

- **SIM Online PD Classes** for educators (self-paced courses on Canvas, with follow-up coaching time)
 - Content Enhancement Routines:
 - [Cross-Curricular Argumentation Routine](#)
 - [Framing Routine](#)
 - [Unit Organizer Routine](#)

- Learning Strategies:
 - [Fundamentals of Paraphrasing and Summarizing Strategy](#)
 - [The Paragraph Writing Strategy](#)
 - [Possible Selves Strategy](#) (1st or 2nd edition)
 - [Sentence Writing Strategies \(Fundamentals and Proficiency\)](#)
-

Follow SIM® on: [Facebook](#) | [Instagram](#) | [LinkedIn](#)

KU Center for Research on Learning
1200 Sunnyside Ave, Haworth 3107
Lawrence, Kansas 66045
simpd@ku.edu
785-864-0626

The University of Kansas prohibits discrimination on the basis of race, color, ethnicity, religion, sex, national origin, age, ancestry, disability, status as a veteran, sexual orientation, marital status, parental status, gender identity, gender expression, and genetic information in the university's programs and activities. Retaliation is also prohibited by university policy. The following person has been designated to handle inquiries regarding the **nondiscrimination policies** and **procedures** and is the Title IX Coordinator for all KU and KUMC campuses: Associate Vice Chancellor for the Office of Civil Rights and Title IX, civilrights@ku.edu, Room 1082, Dole Human Development Center, 1000 Sunnyside Avenue, Lawrence, KS 66045, 785-864-6414, 711 TTY. Reports can be submitted by contacting the Title IX Coordinator as provided herein or **online** and complaints can be submitted with the Title IX Coordinator or **online**.