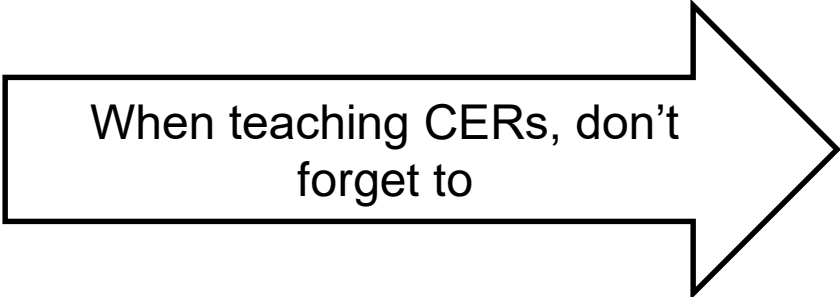


# 8<sup>th</sup> Grade Unit 2 Organizers

## Teacher Copy



When teaching CERs, don't forget to

### Teacher Notes

Other Content Enhancement Routines that can be used during this Unit:

- Periodic Table FRAME
- Periodic Table and Grocery Store Anchoring Table

#### Cue Do Review Quick Reference Guide

##### Cue

1. Name the Routine
2. Explain how the routine will help students learn
3. Explain to students how they should participate

##### Do

4. Implement the linking steps
5. Ask students probing questions in order to co-construct the device
6. Provide positive and corrective feedback if necessary

##### Review

7. Ask questions about the critical content on device
8. Ask questions about the learning process and how the device works
9. Model how to use the device as a study tool, guide for doing other work

# The Unit Organizer

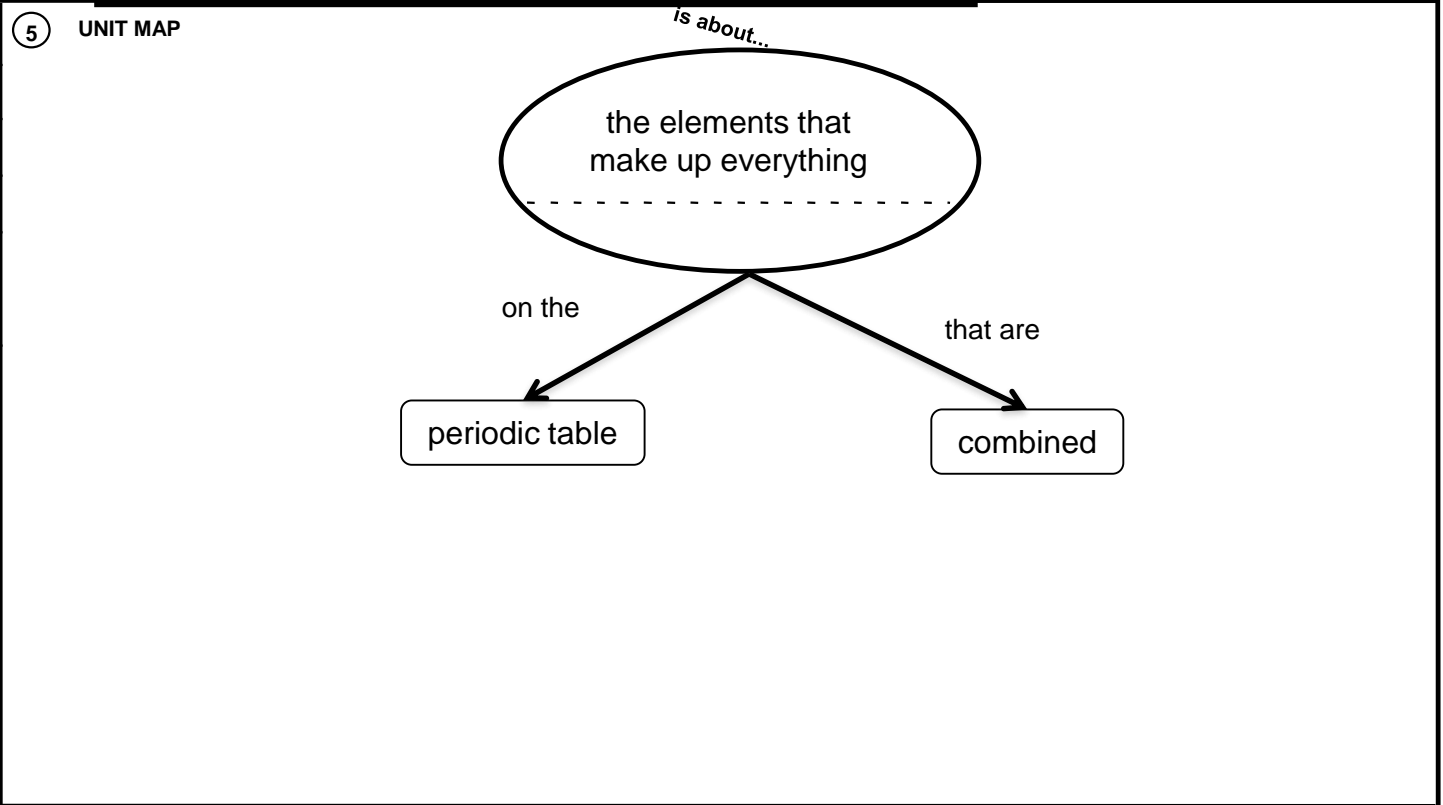
④ BIGGER PICTURE

NAME \_\_\_\_\_  
DATE \_\_\_\_\_

← Elements that make up all matter →

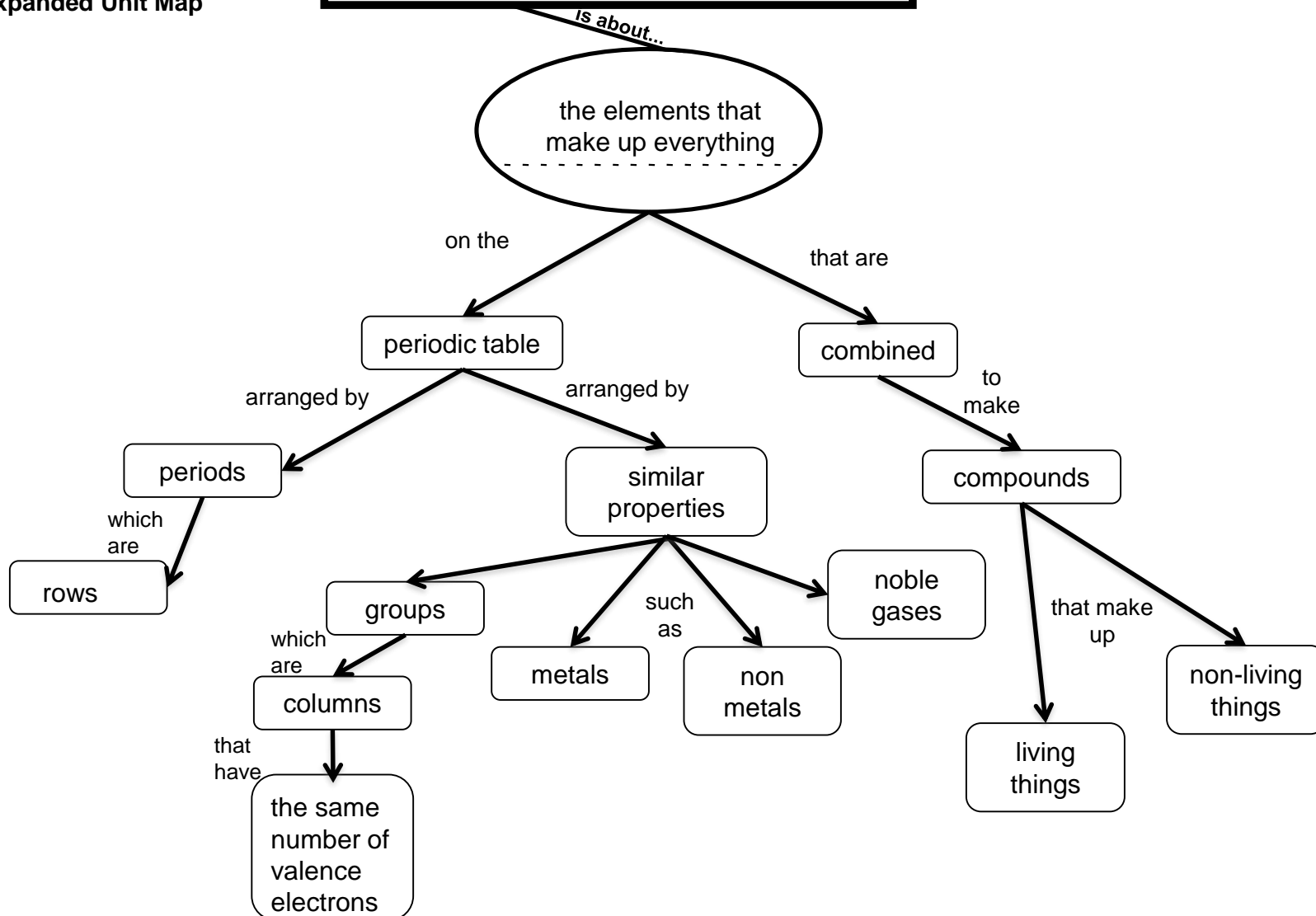
② LAST UNIT /Experience Unit 2.1: Atomic Structure	① CURRENT UNIT Unit 2.2: Periodic Table and Elements	③ NEXT UNIT /Experience Unit 2.3: Mixtures and Pure Substances
---	---	---

⑧ UNIT SCHEDULE

UNIT SELF-TEST QUESTIONS	⑦	How does the way elements are grouped in the periodic table serve as an advantage to scientists? The periodic table is an essential reference for anyone who studies the field of chemistry. What does periodic mean, and how does it apply to the periodic table? What property do elements share if they are on the same row of the periodic table? What if they are in the same column? What is the difference between an element and a compound? What role do electrons play in the bonding of elements?	⑥	RELATIONSHIPS	UNIT
				Recognize	
				Explain	
				Describe	

### 9 Expanded Unit Map



# 8<sup>th</sup> Grade Unit 2 Organizers

## Student Copy

# The Unit Organizer

④ BIGGER PICTURE

NAME \_\_\_\_\_  
DATE \_\_\_\_\_

② LAST UNIT /Experience		① CURRENT UNIT		③ NEXT UNIT /Experience	
⑧ UNIT SCHEDULE		⑤ UNIT MAP			
		<div>is about...</div> <div>on the</div> <div>that are</div>			
⑦ UNIT SELF-TEST QUESTIONS		⑥ UNIT RELATIONSHIPS			

# The Unit Organizer

NAME \_\_\_\_\_  
DATE \_\_\_\_\_

## 9 Expanded Unit Map

