

# The Unit Organizer

④ BIGGER PICTURE

NAME \_\_\_\_\_  
DATE \_\_\_\_\_

<div style="display: flex; justify-content: space-between; align-items: center;"> <span>←</span> <span style="color: red; font-weight: bold; font-size: 1.2em;">Linear Functions</span> <span>→</span> </div>																
② LAST UNIT /Experience <span style="color: red; font-weight: bold;">Linear Functions</span>	① CURRENT UNIT <span style="color: red; font-weight: bold;">Systems of Equations and Inequalities</span>	③ NEXT UNIT /Experience <span style="color: red; font-weight: bold;">Factoring Polynomials</span>														
⑧ UNIT SCHEDULE <table border="1" style="width: 100%; border-collapse: collapse;"> <tr><td style="height: 20px;">p. 272</td></tr> <tr><td style="height: 20px;">p. 273-274</td></tr> <tr><td style="height: 20px;">p. 277</td></tr> <tr><td style="height: 20px;">p. 286-287</td></tr> <tr><td style="height: 20px;">p. 289</td></tr> <tr><td style="height: 20px;">p. 293-294</td></tr> <tr><td style="height: 20px;">p. 295</td></tr> <tr><td style="height: 20px;">p. 300-302</td></tr> <tr><td style="height: 20px;">p. 303</td></tr> <tr><td style="height: 20px;">p. 311-312</td></tr> <tr><td style="height: 20px;"> </td></tr> <tr><td style="height: 20px;"> </td></tr> <tr><td style="height: 20px;"> </td></tr> <tr><td style="height: 20px;"> </td></tr> </table>	p. 272	p. 273-274	p. 277	p. 286-287	p. 289	p. 293-294	p. 295	p. 300-302	p. 303	p. 311-312					⑤ UNIT MAP <div style="text-align: center; margin-top: 20px;"> <p><i>is about...</i></p> <pre> graph TD     A([identifying the solution of linear systems]) --- by  B([Graphing lines])     A --- using  C([substitution method])     A --- using  D([elimination method])     A --- and  E([linear inequalities])     A --- including  F([systems of inequalities])                     </pre> </div>	⑥ RELATIONSHIPS UNIT
p. 272																
p. 273-274																
p. 277																
p. 286-287																
p. 289																
p. 293-294																
p. 295																
p. 300-302																
p. 303																
p. 311-312																
⑦ UNIT SELF-TEST QUESTIONS <ol style="list-style-type: none"> <li>1) Identify a solution to a system of equations on a graph</li> <li>2) Solve the system using substitution method; <math>y = x + 3</math> and <math>2x + 3y = -1</math></li> <li>3) solve the system using elimination method; <math>2x + 3y = 4</math> and <math>3x + 5y = 8</math></li> <li>4) Graph <math>y \geq 2x - 4</math></li> <li>5) identify the solution to a system of inequalities on a graph</li> </ol>		<table border="1" style="width: 100%; border-collapse: collapse;"> <tr><td style="height: 30px; color: red; font-weight: bold;">Identify</td></tr> <tr><td style="height: 30px; color: red; font-weight: bold;">Solve</td></tr> <tr><td style="height: 30px; color: red; font-weight: bold;">Graph</td></tr> <tr><td style="height: 30px;"> </td></tr> </table>	Identify	Solve	Graph											
Identify																
Solve																
Graph																

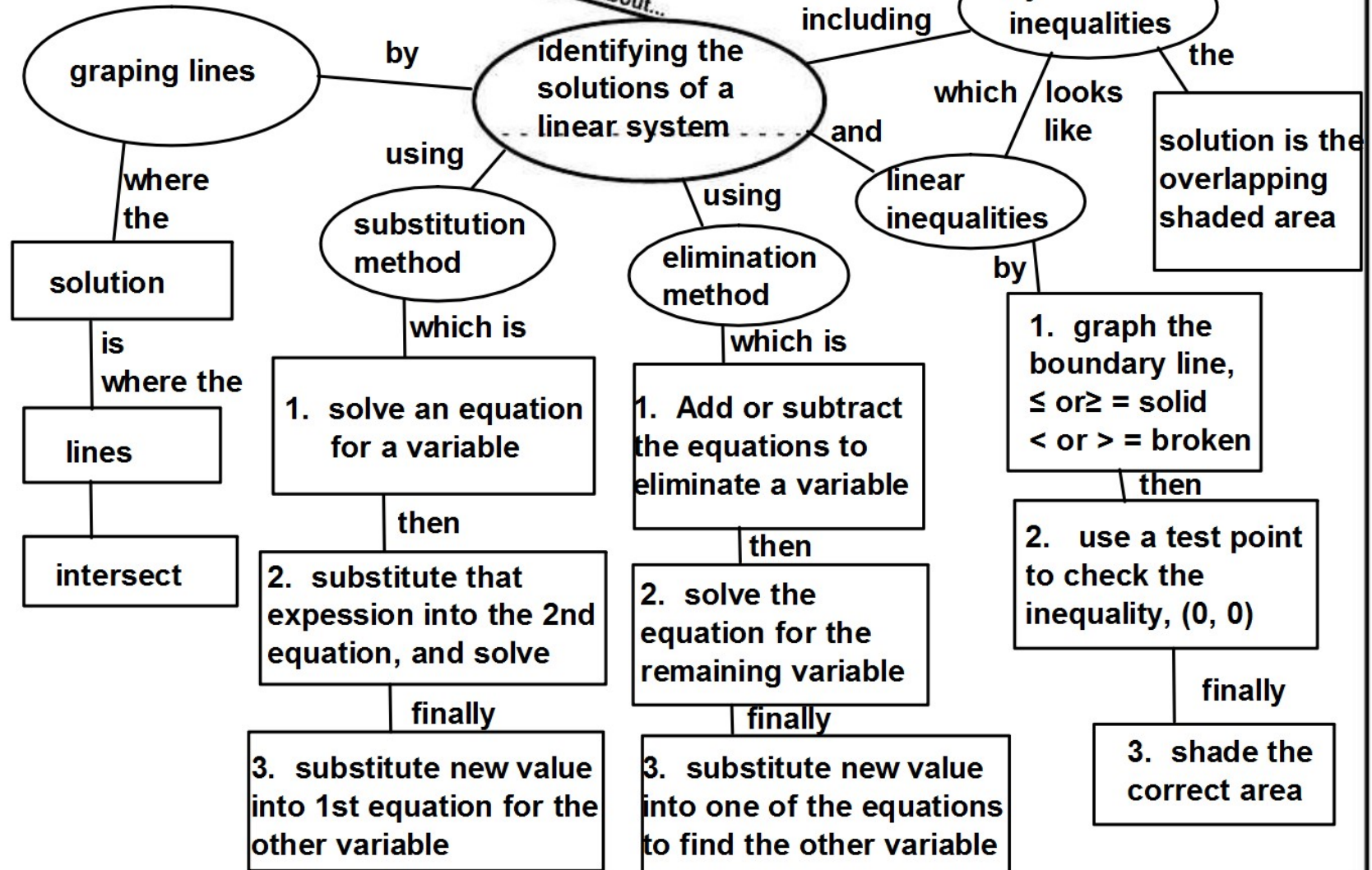
# The Unit Organizer

## Systems of equations and inequalities

NAME \_\_\_\_\_

DATE \_\_\_\_\_

### 9 Expanded Unit Map



NEW  
UNIT  
SELF-TEST  
QUESTIONS

Rate yourself

1 \_\_\_\_\_ 2 \_\_\_\_\_ 3 \_\_\_\_\_ 4 \_\_\_\_\_