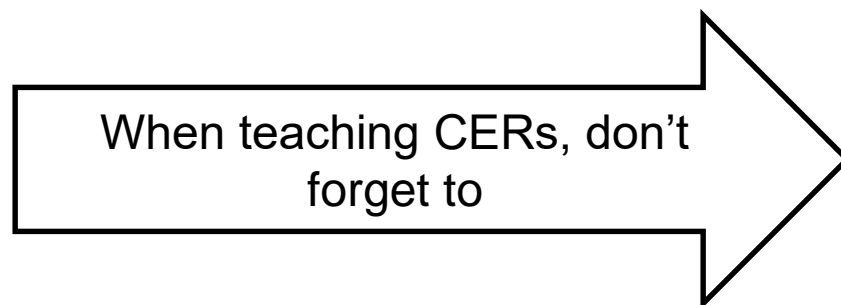


Biology Unit 7 Organizers

Teacher Copy

Cue Do Review Quick Reference Guide



Teacher Notes

Other Content Enhancement Routines that can be used during this Unit:

- Specific vs Non-specific Immunity Concept Comparison

Cue

1. Name the Routine
2. Explain how the routine will help students learn
3. Explain to students how they should participate

Do

4. Implement the linking steps
5. Ask students probing questions in order to co-construct the device
6. Provide positive and corrective feedback if necessary

Review

7. Ask questions about the critical content on device
8. Ask questions about the learning process and how the device works
9. Model how to use the device as a study tool, guide for doing other work

The Unit Organizer

④ BIGGER PICTURE

NAME _____

DATE _____

← How the human body can respond to the environment →

② LAST UNIT/Experience

Ecology

①

CURRENT UNIT

Human Health

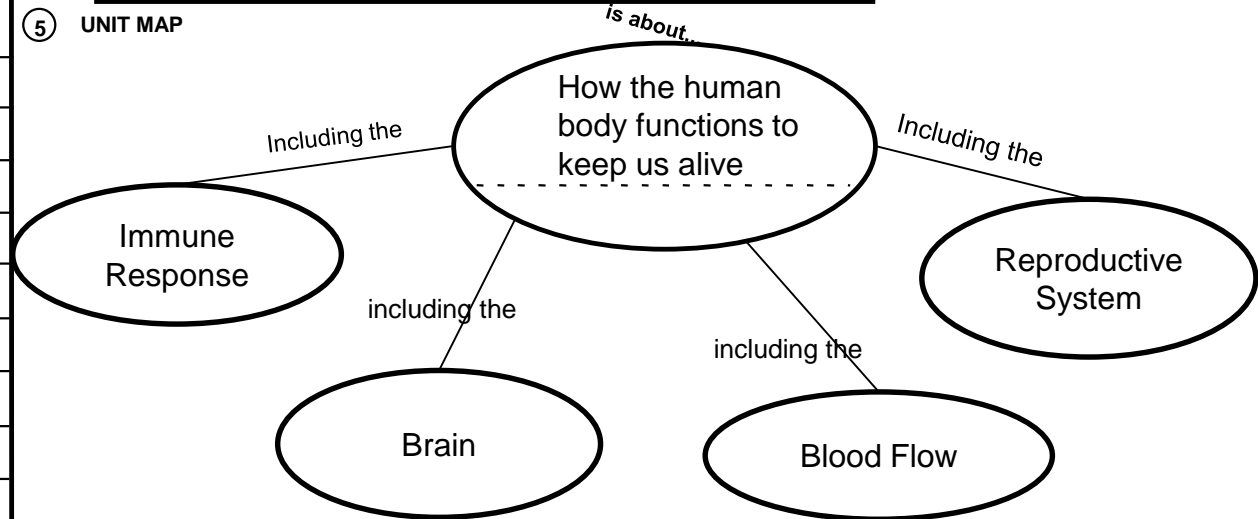
③

NEXT UNIT/Experience

EOC Review

⑧ UNIT SCHEDULE

⑤ UNIT MAP



UNIT SELF-TEST
QUESTIONS

1. How do the body systems work independently and collectively to maintain homeostasis?
2. How does our body's immune response protect us from sickness?
3. Why are blood pressure and flow affected by people's behavior?
4. How do the male and female reproductive systems create a zygote?
5. How does fetal development vary during each trimester?

part/function

cause/effect

problem/solution

timeline

⑥

UNIT
RELATIONSHIPS

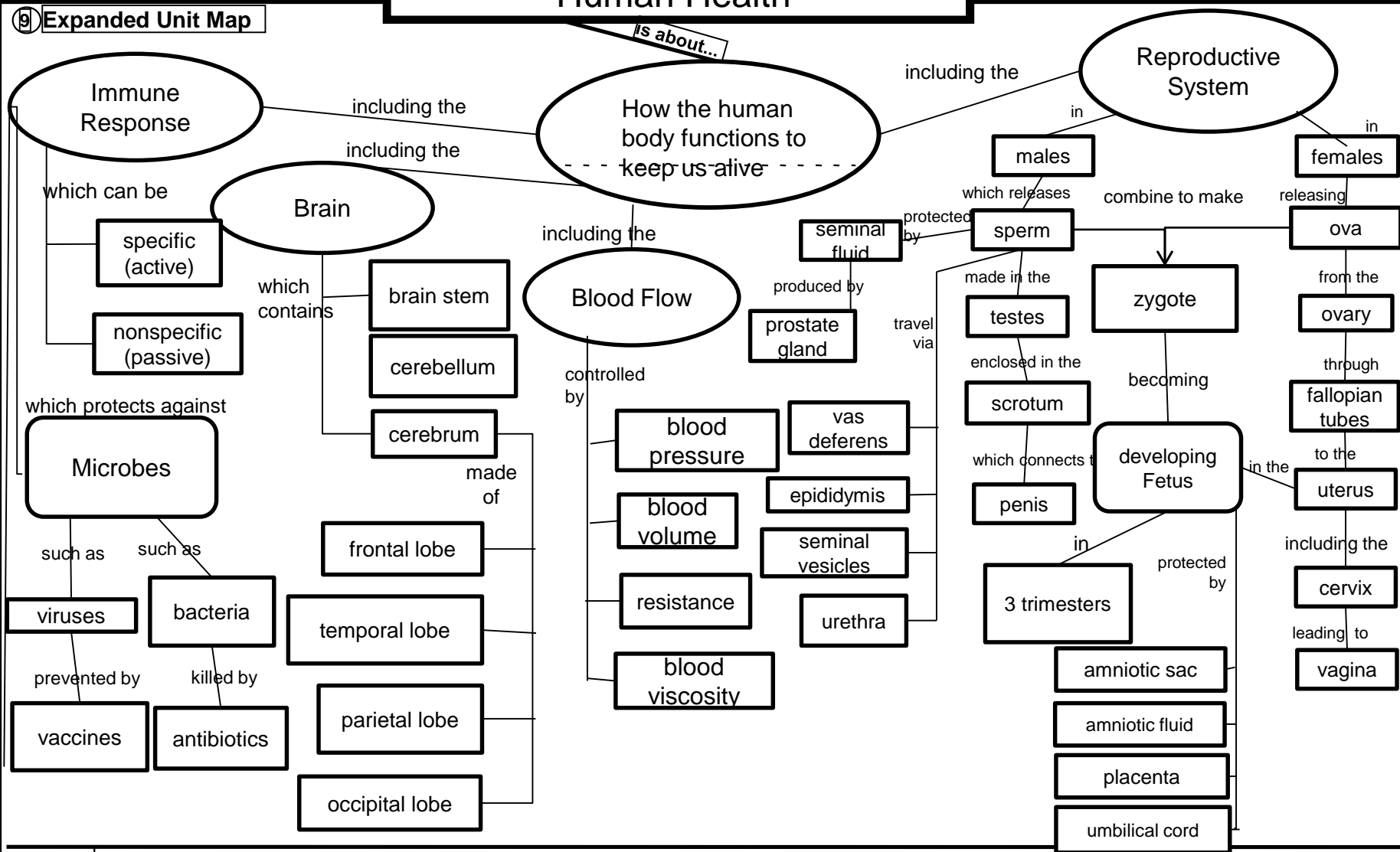
⑦

The Unit Organizer

Human Health

NAME _____
DATE _____

9 Expanded Unit Map



Biology Unit 7 Organizers

Student Copy

The Unit Organizer

④ BIGGER PICTURE

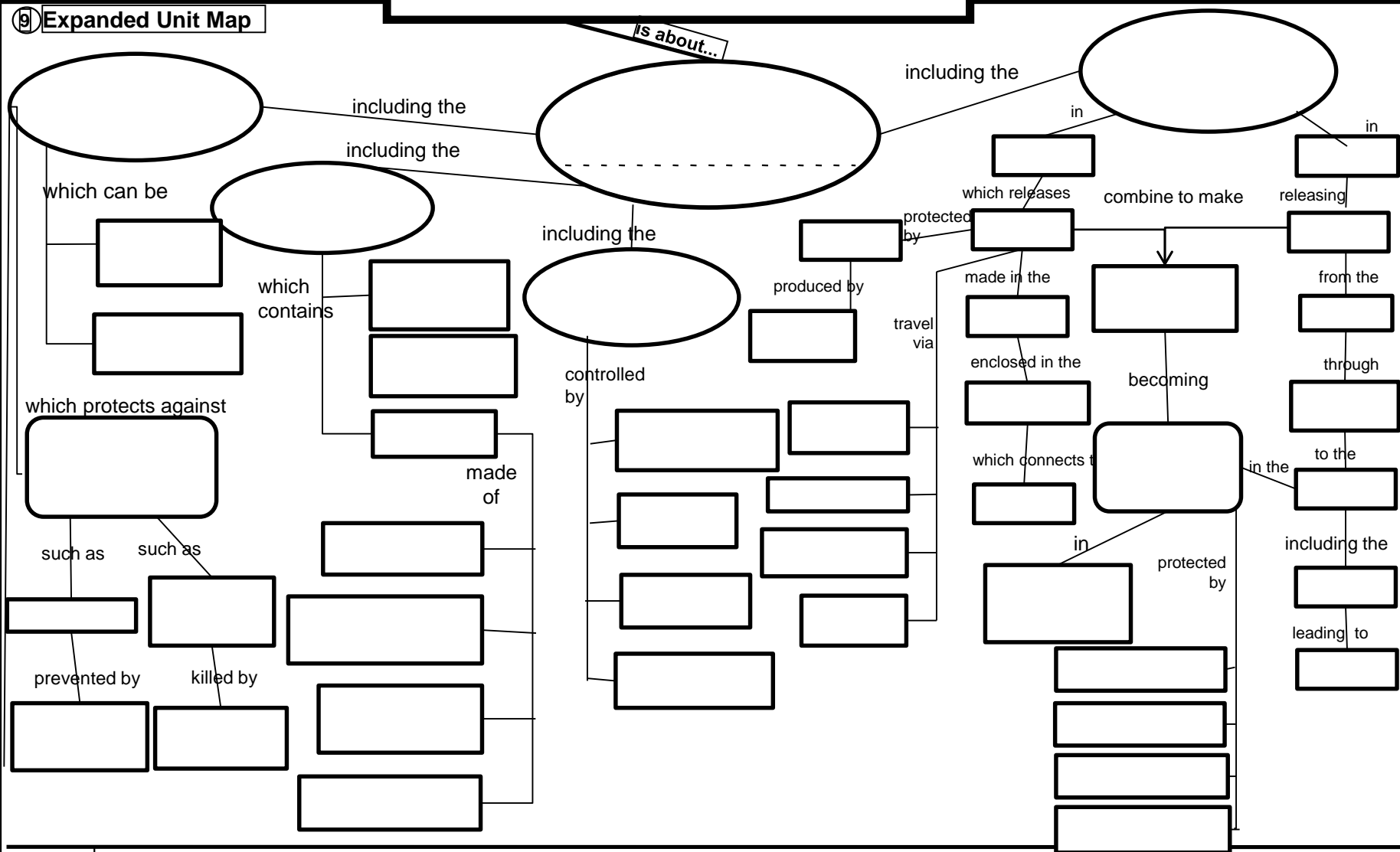
NAME _____
DATE _____

<div style="display: flex; justify-content: space-between; align-items: center;"> ← → </div>																																												
② LAST UNIT/Experience	① CURRENT UNIT	③ NEXT UNIT/Experience EOC Review																																										
⑧ UNIT SCHEDULE	⑤ UNIT MAP																																											
<table border="1" style="width: 100%; border-collapse: collapse;"> <tr><td style="width: 20px; height: 20px;"></td><td style="height: 20px;"></td></tr> <tr><td style="width: 20px; height: 20px;"></td><td style="height: 20px;"></td></tr> <tr><td style="width: 20px; height: 20px;"></td><td style="height: 20px;"></td></tr> <tr><td style="width: 20px; height: 20px;"></td><td style="height: 20px;"></td></tr> <tr><td style="width: 20px; height: 20px;"></td><td style="height: 20px;"></td></tr> <tr><td style="width: 20px; height: 20px;"></td><td style="height: 20px;"></td></tr> <tr><td style="width: 20px; height: 20px;"></td><td style="height: 20px;"></td></tr> <tr><td style="width: 20px; height: 20px;"></td><td style="height: 20px;"></td></tr> <tr><td style="width: 20px; height: 20px;"></td><td style="height: 20px;"></td></tr> <tr><td style="width: 20px; height: 20px;"></td><td style="height: 20px;"></td></tr> <tr><td style="width: 20px; height: 20px;"></td><td style="height: 20px;"></td></tr> <tr><td style="width: 20px; height: 20px;"></td><td style="height: 20px;"></td></tr> <tr><td style="width: 20px; height: 20px;"></td><td style="height: 20px;"></td></tr> <tr><td style="width: 20px; height: 20px;"></td><td style="height: 20px;"></td></tr> <tr><td style="width: 20px; height: 20px;"></td><td style="height: 20px;"></td></tr> <tr><td style="width: 20px; height: 20px;"></td><td style="height: 20px;"></td></tr> <tr><td style="width: 20px; height: 20px;"></td><td style="height: 20px;"></td></tr> <tr><td style="width: 20px; height: 20px;"></td><td style="height: 20px;"></td></tr> <tr><td style="width: 20px; height: 20px;"></td><td style="height: 20px;"></td></tr> <tr><td style="width: 20px; height: 20px;"></td><td style="height: 20px;"></td></tr> <tr><td style="width: 20px; height: 20px;"></td><td style="height: 20px;"></td></tr> </table>																																												
⑦ UNIT SELF-TEST QUESTIONS	⑥ UNIT RELATIONSHIPS																																											
1. How do the body systems work independently and collectively to maintain homeostasis? 2. How does our body's immune response protect us from sickness? 3. Why are blood pressure and flow affected by people's behavior? 4. How do the male and female reproductive systems create a zygote? 5. How does fetal development vary during each trimester?	<table border="1" style="width: 100%; border-collapse: collapse;"> <tr><td style="width: 20px; height: 20px;"></td><td style="height: 20px;"></td></tr> <tr><td style="width: 20px; height: 20px;"></td><td style="height: 20px;"></td></tr> <tr><td style="width: 20px; height: 20px;"></td><td style="height: 20px;"></td></tr> <tr><td style="width: 20px; height: 20px;"></td><td style="height: 20px;"></td></tr> <tr><td style="width: 20px; height: 20px;"></td><td style="height: 20px;"></td></tr> </table>																																											

The Unit Organizer

NAME _____
DATE _____

9 Expanded Unit Map



10
NEW
UNIT
SELF-TEST
QUESTIONS